

# Anti-DPEP3 Reference Antibody (tamrintamab)

Recombinant Antibody

Catalog # APR10884

## Product Information

---

<b>Application</b>	FC, Kinetics, Animal Model
<b>Primary Accession</b>	<a href="#">Q9H4B8</a>
<b>Reactivity</b>	Human
<b>Clonality</b>	Monoclonal
<b>Isotype</b>	IgG1
<b>Calculated MW</b>	53687

## Additional Information

---

<b>Target/Specificity</b>	DPEP3
<b>Endotoxin Conjugation</b>	Unconjugated
<b>Expression system</b>	CHO Cell
<b>Format</b>	Purified monoclonal antibody supplied in PBS, pH6.0, without preservative. This antibody is purified through a protein A column.

## Protein Information

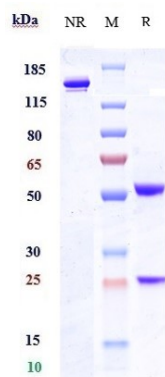
---

<b>Name</b>	DPEP3
<b>Function</b>	Lacks dipeptidase activity and is unable to hydrolyze cystinyl-bis-glycine, leukotriene D4 and the beta-lactam antibiotic imipenem (PubMed: <a href="#">32325220</a> ). The absence of activity may be due to the inability of asparagine (instead of aspartate found in DPEP1/2) at position 359 to function as the acid/base catalyst and activate the nucleophilic water/hydroxide (PubMed: <a href="#">32325220</a> ). A tyrosine (instead of histidine) at position 269 reduces affinity for the beta zinc and may cause substrate steric hindrance (PubMed: <a href="#">32325220</a> ).
<b>Cellular Location</b>	Membrane {ECO:0000250 UniProtKB:Q9DA79}; Lipid- anchor, GPI-anchor {ECO:0000250 UniProtKB:Q9DA79}

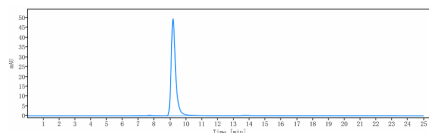
## Images

---

Anti-DPEP3 Reference Antibody (tamrintamab) on SDS-PAGE under reducing (R) condition. The gel was stained with Coomassie Blue. The purity of the protein is



greater than 90%



The purity of Anti-DPEP3 Reference Antibody (tamrintamab) is more than 95% ,determined by SEC-HPLC.

Please note: All products are 'FOR RESEARCH USE ONLY. NOT FOR USE IN DIAGNOSTIC OR THERAPEUTIC PROCEDURES'.