

# Anti-Fc gamma R1 Reference Antibody (Medarex Patent Anti-Fc-Gamma-R1)

Recombinant Antibody  
Catalog # APR10908

## Product Information

---

<b>Application</b>	FC, Kinetics, Animal Model
<b>Primary Accession</b>	<a href="#">P12314</a>
<b>Reactivity</b>	Human
<b>Clonality</b>	Monoclonal
<b>Isotype</b>	IgG1
<b>Calculated MW</b>	42632

## Additional Information

---

<b>Target/Specificity</b>	Fc gamma R1
<b>Endotoxin Conjugation</b>	Unconjugated
<b>Expression system</b>	CHO Cell
<b>Format</b>	Purified monoclonal antibody supplied in PBS, pH6.0, without preservative. This antibody is purified through a protein A column.

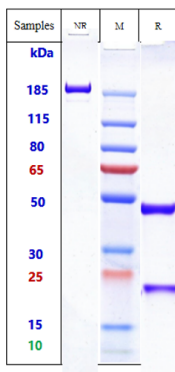
## Protein Information

---

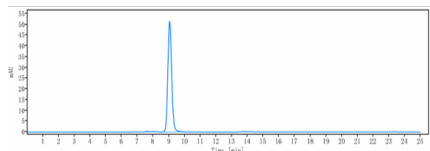
<b>Name</b>	FCGR1A
<b>Synonyms</b>	FCG1, FCGR1, IGFR1
<b>Function</b>	High affinity receptor for the Fc region of immunoglobulins gamma. Functions in both innate and adaptive immune responses. Mediates IgG effector functions on monocytes triggering antibody-dependent cellular cytotoxicity (ADCC) of virus-infected cells.
<b>Cellular Location</b>	Cell membrane; Single-pass type I membrane protein Note=Stabilized at the cell membrane through interaction with FCER1G
<b>Tissue Location</b>	Monocyte/macrophage specific.

## Images

---



Anti-Fc gamma R1 Reference Antibody (Medarex Patent Anti-Fc-Gamma-R1) on SDS-PAGE under reducing (R) condition. The gel was stained with Coomassie Blue. The purity of the protein is greater than 90%



The purity of Anti-Fc gamma R1 Reference Antibody (Medarex Patent Anti-Fc-Gamma-R1) is more than 95% ,determined by SEC-HPLC.

Please note: All products are 'FOR RESEARCH USE ONLY. NOT FOR USE IN DIAGNOSTIC OR THERAPEUTIC PROCEDURES'.