

Anti-GD3 Reference Antibody (ecromeximab-MMAE)

Recombinant Antibody

Catalog # APR10917

Product Information

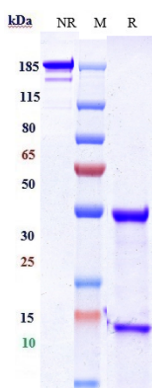
Application	FC, Kinetics, Animal Model
Primary Accession	NA
Reactivity	Human
Clonality	Monoclonal
Isotype	IgG1
Calculated MW	150 KDa

Additional Information

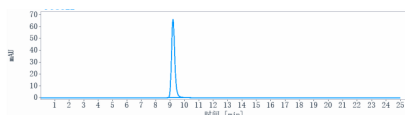
Target/Specificity	GD3
Endotoxin	
Conjugation	Unconjugated
Expression system	CHO Cell
Format	Purified monoclonal antibody supplied in PBS, pH6.0, without preservative. This antibody is purified through a protein A column.

Protein Information

Images



Anti-GD3 Reference Antibody (ecromeximab-MMAE) on SDS-PAGE under reducing (R) condition. The gel was stained with Coomassie Blue. The purity of the protein is greater than 90%



The purity of Anti-GD3 Reference Antibody (ecromeximab-MMAE) is more than 95%, determined by SEC-HPLC.

Please note: All products are 'FOR RESEARCH USE ONLY. NOT FOR USE IN DIAGNOSTIC OR THERAPEUTIC PROCEDURES'.