

Anti-Haptoglobin Reference Antibody (KHK patent anti-Haptoglobin)

Recombinant Antibody
Catalog # APR10929

Product Information

Application	FC, Kinetics, Animal Model
Primary Accession	P00738
Reactivity	Human, Mouse
Clonality	Monoclonal
Isotype	IgG1
Calculated MW	45205

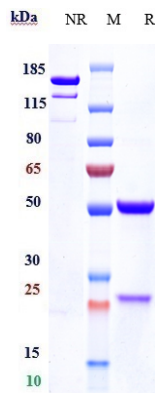
Additional Information

Target/Specificity	Haptoglobin
Endotoxin Conjugation	Unconjugated
Expression system	CHO Cell
Format	Purified monoclonal antibody supplied in PBS, pH6.0, without preservative. This antibody is purified through a protein A column.

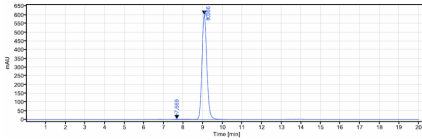
Protein Information

Name	HP
Function	As a result of hemolysis, hemoglobin is found to accumulate in the kidney and is secreted in the urine. Haptoglobin captures, and combines with free plasma hemoglobin to allow hepatic recycling of heme iron and to prevent kidney damage. Haptoglobin also acts as an antioxidant, has antibacterial activity, and plays a role in modulating many aspects of the acute phase response. Hemoglobin/haptoglobin complexes are rapidly cleared by the macrophage CD163 scavenger receptor expressed on the surface of liver Kupfer cells through an endocytic lysosomal degradation pathway.
Cellular Location	Secreted.
Tissue Location	Expressed by the liver and secreted in plasma.

Images



Anti-Haptoglobin Reference Antibody (KHK patent anti-Haptoglobin) on SDS-PAGE under reducing (R) condition. The gel was stained with Coomassie Blue. The purity of the protein is greater than 95%



The purity of Anti-Haptoglobin Reference Antibody (KHK patent anti-Haptoglobin) is more than 95% ,determined by SEC-HPLC.

Please note: All products are 'FOR RESEARCH USE ONLY. NOT FOR USE IN DIAGNOSTIC OR THERAPEUTIC PROCEDURES'.