

Anti-Hepcidin / HAMP Reference Antibody (Ludwig-Maximilians U. anti_Hepsin)

Recombinant Antibody
Catalog # APR10930

Product Information

Application	FC, Kinetics, Animal Model
Primary Accession	P81172
Reactivity	Human
Clonality	Monoclonal
Isotype	IgG1
Calculated MW	9408

Additional Information

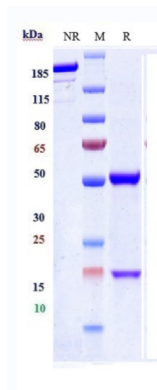
Target/Specificity	Hepcidin / HAMP
Endotoxin Conjugation	Unconjugated
Expression system	CHO Cell
Format	Purified monoclonal antibody supplied in PBS, pH6.0, without preservative. This antibody is purified through a protein A column.

Protein Information

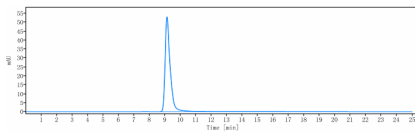
Name	HAMP (HGNC:15598)
Synonyms	HEPC, LEAP1
Function	Liver-produced hormone that constitutes the main circulating regulator of iron absorption and distribution across tissues. Acts by promoting endocytosis and degradation of ferroportin/SLC40A1, leading to the retention of iron in iron-exporting cells and decreased flow of iron into plasma (PubMed: 22682227 , PubMed: 29237594 , PubMed: 32814342). Controls the major flows of iron into plasma: absorption of dietary iron in the intestine, recycling of iron by macrophages, which phagocytose old erythrocytes and other cells, and mobilization of stored iron from hepatocytes (PubMed: 22306005).
Cellular Location	Secreted.
Tissue Location	Highest expression in liver and to a lesser extent in heart and brain. Low levels in lung, tonsils, salivary gland, trachea, prostate gland, adrenal gland and thyroid gland. Secreted into the urine and blood (PubMed:11034317).

Expressed by hepatocytes (PubMed:15124018).

Images



Anti-Hepcidin / HAMP Reference Antibody (Ludwig-Maximilians U. anti_Hepsin) on SDS-PAGE under reducing (R) condition. The gel was stained with Coomassie Blue. The purity of the protein is greater than 90%



The purity of Anti-Hepcidin / HAMP Reference Antibody (Ludwig-Maximilians U. anti_Hepsin) is more than 95% ,determined by SEC-HPLC.

Please note: All products are 'FOR RESEARCH USE ONLY. NOT FOR USE IN DIAGNOSTIC OR THERAPEUTIC PROCEDURES'.