

Anti-IL-20 Reference Antibody (Cheng Kung U. patent anti-IL-20)

Recombinant Antibody
Catalog # APR10952

Product Information

Application	FC, Kinetics, Animal Model
Primary Accession	Q9NYY1
Reactivity	Human
Clonality	Monoclonal
Isotype	IgG1
Calculated MW	20072

Additional Information

Target/Specificity	IL-20
Endotoxin Conjugation	Unconjugated
Expression system	CHO Cell
Format	Purified monoclonal antibody supplied in PBS, pH6.0, without preservative. This antibody is purified through a protein A column.

Protein Information

Name	IL20
Synonyms	ZCYTO10
Function	Pro-inflammatory and angiogenic cytokine mainly secreted by monocytes and skin keratinocytes that plays crucial roles in immune responses, regulation of inflammatory responses, hemopoiesis, as well as epidermal cell and keratinocyte differentiation (PubMed: 17277128 , PubMed: 34403503). Enhances tissue remodeling and wound-healing activities and restores the homeostasis of epithelial layers during infection and inflammatory responses to maintain tissue integrity (PubMed: 17277128). Affects multiple actin-mediated functions in activated neutrophils leading to inhibition of phagocytosis, granule exocytosis, and migration (PubMed: 28424238). Exert its effects via the type I IL-20 receptor complex consisting of IL20RA and IL20RB (PubMed: 11706020). Alternatively, can mediate its activity through a second receptor complex called type II IL-20 receptor complex composed of IL22RA1 and IL20RB (PubMed: 11564763). Acts as an arteriogenic and vascular remodeling factory by activating a range of signaling processes including phosphorylations of JAK2 and STAT5 as well as activation of the serine and

threonine kinases AKT and ERK1/2 (By similarity). Alternatively, can activate STAT3 phosphorylation and transcriptional activity in a JAK2, ERK1/2 and p38 MAPK-dependent manner in keratinocytes (PubMed:[23614738](#)).

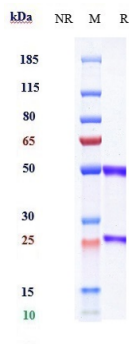
Cellular Location

Secreted.

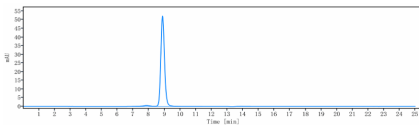
Tissue Location

Expressed in most tissues and five major cell types: epithelial cells (primarily skin, buccal mucosa, tongue, nasal mucosa, lung, ureter, breast, prostate, fallopian tube, and adrenal gland), myoepithelial cells (mainly prostate), endothelial cells (mainly in small vessels or capillaries), macrophages, and skeletal muscle. Isoform 2 was detected in the lung tissue only

Images



Anti-IL-20 Reference Antibody (Cheng Kung U. patent anti-IL-20) on SDS-PAGE under reducing (R) condition. The gel was stained with Coomassie Blue. The purity of the protein is greater than 90%



The purity of Anti-IL-20 Reference Antibody (Cheng Kung U. patent anti-IL-20) is more than 95% ,determined by SEC-HPLC.

Please note: All products are 'FOR RESEARCH USE ONLY. NOT FOR USE IN DIAGNOSTIC OR THERAPEUTIC PROCEDURES'.