

Anti-IL-21 Reference Antibody (Lilly patent anti-IL-21)

Recombinant Antibody
Catalog # APR10954

Product Information

Application	FC, Kinetics, Animal Model
Primary Accession	Q9HBE4
Reactivity	Human, Mouse, Rat, Rabbit
Clonality	Monoclonal
Isotype	IgG1
Calculated MW	18653

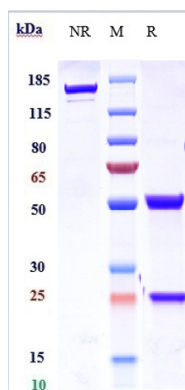
Additional Information

Target/Specificity	IL-21
Endotoxin	
Conjugation	Unconjugated
Expression system	CHO Cell
Format	Purified monoclonal antibody supplied in PBS, pH6.0, without preservative. This antibody is purified through a protein A column.

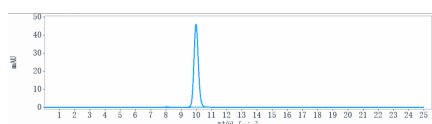
Protein Information

Name	IL21 (HGNC:6005)
Function	<p>Cytokine with immunoregulatory activity. May promote the transition between innate and adaptive immunity. Induces the production of IgG(1) and IgG(3) in B-cells (By similarity). Implicated in the generation and maintenance of T follicular helper (Tfh) cells and the formation of germinal-centers. Together with IL6, control the early generation of Tfh cells and are critical for an effective antibody response to acute viral infection (By similarity). May play a role in proliferation and maturation of natural killer (NK) cells in synergy with IL15. May regulate proliferation of mature B- and T-cells in response to activating stimuli. In synergy with IL15 and IL18 stimulates interferon gamma production in T-cells and NK cells (PubMed:11081504, PubMed:15178704). During T-cell mediated immune response may inhibit dendritic cells (DC) activation and maturation (By similarity).</p>
Cellular Location	Secreted.
Tissue Location	Expressed in activated CD4-positive T-cells but not in CD8-positive T-cells, B-cells, or monocytes

Images



Anti-IL-21 Reference Antibody (Lilly patent anti-IL-21) on SDS-PAGE under reducing (R) condition. The gel was stained with Coomassie Blue. The purity of the protein is greater than 95%



The purity of Anti-IL-21 Reference Antibody (Lilly patent anti-IL-21) is more than 99.35% ,determined by SEC-HPLC.

Please note: All products are 'FOR RESEARCH USE ONLY. NOT FOR USE IN DIAGNOSTIC OR THERAPEUTIC PROCEDURES'.