

Anti-KIR2DL1 / CD158a Reference Antibody (Innate patent anti-KIR2DL)

Recombinant Antibody
Catalog # APR10967

Product Information

Application	FC, Kinetics, Animal Model
Primary Accession	P43626
Reactivity	Human
Clonality	Monoclonal
Isotype	IgG1
Calculated MW	38580

Additional Information

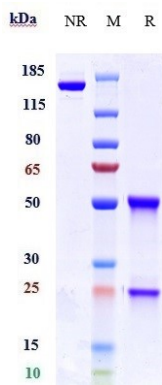
Target/Specificity	KIR2DL1 / CD158a
Endotoxin Conjugation	Unconjugated
Expression system	CHO Cell
Format	Purified monoclonal antibody supplied in PBS, pH6.0, without preservative. This antibody is purified through a protein A column.

Protein Information

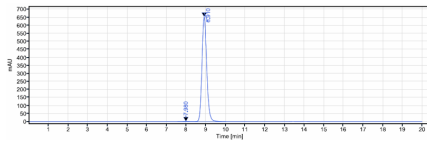
Name	KIR2DL1 (HGNC:6329)
Synonyms	CD158A, NKAT1
Function	Receptor on natural killer (NK) cells for some HLA-C alleles such as w4 and w6. Inhibits the activity of NK cells thus preventing cell lysis.
Cellular Location	Cell membrane; Single-pass type I membrane protein
Tissue Location	Expressed by NK cells.

Images

Anti-KIR2DL1 / CD158a Reference Antibody (Innate patent anti-KIR2DL) on SDS-PAGE under reducing (R) condition. The gel was stained with Coomassie Blue. The purity of



the protein is greater than 90%



The purity of Anti-KIR2DL1 / CD158a Reference Antibody (Innate patent anti-KIR2DL) is more than 95% ,determined by SEC-HPLC.

Please note: All products are 'FOR RESEARCH USE ONLY. NOT FOR USE IN DIAGNOSTIC OR THERAPEUTIC PROCEDURES'.