

# Anti-LAP Reference Antibody (Brigham and Womens anti-LAP)

Recombinant Antibody  
Catalog # APR10971

## Product Information

---

<b>Application</b>	FC, Kinetics, Animal Model
<b>Primary Accession</b>	<a href="#">P10600</a>
<b>Reactivity</b>	Human, Mouse, Rat
<b>Clonality</b>	Monoclonal
<b>Isotype</b>	IgG2
<b>Calculated MW</b>	47328

## Additional Information

---

<b>Target/Specificity</b>	LAP
<b>Endotoxin Conjugation</b>	Unconjugated
<b>Expression system</b>	CHO Cell
<b>Format</b>	Purified monoclonal antibody supplied in PBS, pH6.0, without preservative. This antibody is purified through a protein A column.

## Protein Information

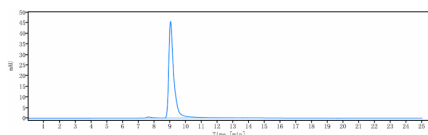
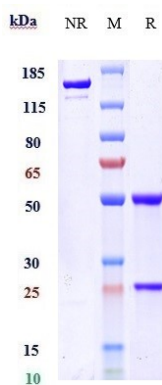
---

<b>Name</b>	TGFB3
<b>Function</b>	Transforming growth factor beta-3 proprotein: Precursor of the Latency-associated peptide (LAP) and Transforming growth factor beta-3 (TGF-beta-3) chains, which constitute the regulatory and active subunit of TGF-beta-3, respectively.
<b>Cellular Location</b>	[Latency-associated peptide]: Secreted, extracellular space, extracellular matrix {ECO:0000250   UniProtKB:P01137}

## Images

---

Anti-LAP Reference Antibody (Brigham and Womens anti-LAP) on SDS-PAGE under reducing (R) condition. The gel was stained with Coomassie Blue. The purity of the protein is greater than 90%



The purity of Anti-LAP Reference Antibody (Brigham and Womens anti-LAP) is more than 95% ,determined by SEC-HPLC.

Please note: All products are 'FOR RESEARCH USE ONLY. NOT FOR USE IN DIAGNOSTIC OR THERAPEUTIC PROCEDURES'.