

# Anti-MAGEA3 Reference Antibody (CT Atlantic patent anti-MAGE-A3)

Recombinant Antibody  
Catalog # APR10974

## Product Information

Application	FC, Kinetics, Animal Model
Primary Accession	<a href="#">P43357</a>
Reactivity	Human, Mouse
Clonality	Monoclonal
Isotype	IgG1
Calculated MW	34747

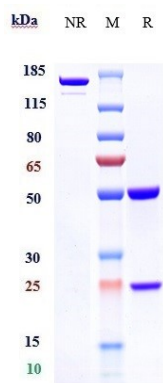
## Additional Information

Target/Specificity	MAGEA3
Endotoxin Conjugation	Unconjugated
Expression system	CHO Cell
Format	Purified monoclonal antibody supplied in PBS, pH6.0, without preservative. This antibody is purified through a protein A column.

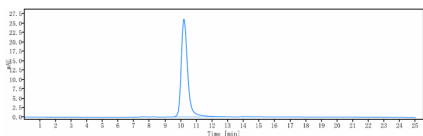
## Protein Information

Name	MAGEA3 {ECO:0000303   PubMed:29779948, ECO:0000312   HGNC:HGNC:6801}
Function	Activator of ubiquitin ligase activity of RING-type zinc finger-containing E3 ubiquitin-protein ligases that acts as a repressor of autophagy (PubMed: <a href="#">20864041</a> , PubMed: <a href="#">31267705</a> ). May enhance ubiquitin ligase activity of TRIM28 and stimulate p53/TP53 ubiquitination by TRIM28. Proposed to act through recruitment and/or stabilization of the Ubl-conjugating enzyme (E2) at the E3:substrate complex (PubMed: <a href="#">17942928</a> , PubMed: <a href="#">20864041</a> ). May play a role in embryonal development and tumor transformation or aspects of tumor progression (PubMed: <a href="#">17942928</a> , PubMed: <a href="#">20864041</a> ). In vitro promotes cell viability in melanoma cell lines (PubMed: <a href="#">17942928</a> ). Antigen recognized on a melanoma by autologous cytolytic T-lymphocytes (PubMed: <a href="#">8113684</a> ).
Tissue Location	Expressed in many tumors of several types, such as melanoma, head and neck squamous cell carcinoma, lung carcinoma and breast carcinoma, but not in normal tissues except for testes and placenta. Never expressed in kidney tumors, Leukemias and lymphomas

# Images



Anti-MAGEA3 Reference Antibody (CT Atlantic patent anti-MAGE-A3) on SDS-PAGE under reducing (R) condition. The gel was stained with Coomassie Blue. The purity of the protein is greater than 90%



The purity of Anti-MAGEA3 Reference Antibody (CT Atlantic patent anti-MAGE-A3) is more than 95% ,determined by SEC-HPLC.

Please note: All products are 'FOR RESEARCH USE ONLY. NOT FOR USE IN DIAGNOSTIC OR THERAPEUTIC PROCEDURES'.