

Anti-PACAP38 Reference Antibody (Lilly patent anti-PACAP)

Recombinant Antibody
Catalog # APR10998

Product Information

Application	FC, Kinetics, Animal Model
Primary Accession	P18509
Reactivity	Human, Rat
Clonality	Monoclonal
Isotype	IgG1
Calculated MW	18835

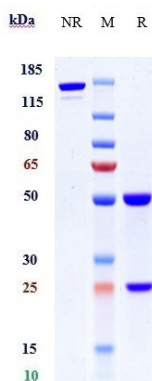
Additional Information

Target/Specificity	PACAP38
Endotoxin Conjugation	Unconjugated
Expression system	CHO Cell
Format	Purified monoclonal antibody supplied in PBS, pH6.0, without preservative. This antibody is purified through a protein A column.

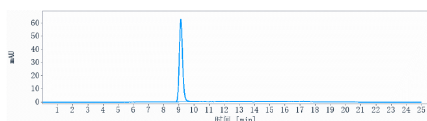
Protein Information

Name	ADCYAP1 (HGNC:241)
Function	<p>PACAP is a neuropeptide involved in diverse array of physiological processes through activating the PACAP subfamily of class B1 G protein-coupled receptors: VIP receptor 1 (VIPR1), VIP receptor 2 (VIPR2), and PACAP type I receptor (ADCYAP1R1) (PubMed:11175907, PubMed:23800469, PubMed:32047270, PubMed:36385145). Exerts neuroprotective and general cytoprotective effects due to anti- apoptotic, anti-inflammatory, and antioxidant actions (PubMed:23800469). Promotes neuron projection development through the RAPGEF2/Rap1/B-Raf/ERK pathway (PubMed:23800469). In chromaffin cells, induces long-lasting increase of intracellular calcium concentrations and neuroendocrine secretion (By similarity). Involved in the control of glucose homeostasis, induces insulin secretion by pancreatic beta cells (By similarity). PACAP exists in two bioactive forms from proteolysis of the same precursor protein, PACAP27 and PACAP38, which differ by eleven amino acid residues in the C-terminus (PubMed:32047270).</p>
Cellular Location	Secreted.

Images



Anti-PACAP38 Reference Antibody (Lilly patent anti-PACAP) on SDS-PAGE under reducing (R) condition. The gel was stained with Coomassie Blue. The purity of the protein is greater than 90%



The purity of Anti-PACAP38 Reference Antibody (Lilly patent anti-PACAP) is more than 95% ,determined by SEC-HPLC.

Please note: All products are 'FOR RESEARCH USE ONLY. NOT FOR USE IN DIAGNOSTIC OR THERAPEUTIC PROCEDURES'.