

Anti-PLA2G1B Reference Antibody (Diaccurate patent anti-sPLA2-GIB)

Recombinant Antibody
Catalog # APR11012

Product Information

Application	FC, Kinetics, Animal Model
Primary Accession	P04054
Reactivity	Human, Mouse
Clonality	Monoclonal
Isotype	IgG1
Calculated MW	16360

Additional Information

Target/Specificity	PLA2G1B
Endotoxin Conjugation	Unconjugated
Expression system	CHO Cell
Format	Purified monoclonal antibody supplied in PBS, pH6.0, without preservative. This antibody is purified through a protein A column.

Protein Information

Name	PLA2G1B
Synonyms	PLA2, PLA2A, PPLA2
Function	Secretory calcium-dependent phospholipase A2 that primarily targets dietary phospholipids in the intestinal tract (PubMed: 10681567 , PubMed: 1420353 , PubMed: 17603006). Hydrolyzes the ester bond of the fatty acyl group attached at sn-2 position of phospholipids (phospholipase A2 activity) with preference for phosphatidylethanolamines and phosphatidylglycerols over phosphatidylcholines (PubMed: 10681567 , PubMed: 1420353 , PubMed: 17603006). May play a role in the biosynthesis of N-acyl ethanolamines that regulate energy metabolism and inflammation in the intestinal tract. Hydrolyzes N-acyl phosphatidylethanolamines to N-acyl lysophosphatidylethanolamines, which are further cleaved by a lysophospholipase D to release N-acyl ethanolamines (By similarity). May act in an autocrine and paracrine manner (PubMed: 25335547 , PubMed: 7721806). Upon binding to the PLA2R1 receptor can regulate podocyte survival and glomerular homeostasis (PubMed: 25335547). Has anti-helminth activity in a process regulated by gut microbiota. Upon helminth infection of intestinal

epithelia, directly affects phosphatidylethanolamine contents in the membrane of helminth larvae, likely controlling an array of phospholipid-mediated cellular processes such as membrane fusion and cell division while providing for better immune recognition, ultimately reducing larvae integrity and infectivity (By similarity).

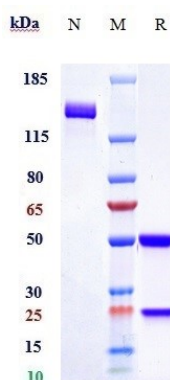
Cellular Location

Secreted. Note=Secreted from pancreatic acinar cells in its inactive form

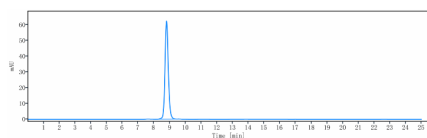
Tissue Location

Selectively expressed in pancreas, lung, liver and kidney. Also detected at lower levels in ovary and testis

Images



Anti-PLA2G1B Reference Antibody (Diaccurate patent anti-sPLA2-GIB) on SDS-PAGE under reducing (R) condition. The gel was stained with Coomassie Blue. The purity of the protein is greater than 90%



The purity of Anti-PLA2G1B Reference Antibody (Diaccurate patent anti-sPLA2-GIB) is more than 95% ,determined by SEC-HPLC.

Please note: All products are 'FOR RESEARCH USE ONLY. NOT FOR USE IN DIAGNOSTIC OR THERAPEUTIC PROCEDURES'.