

Anti-PRAME Reference Antibody (Eureka patent anti-PRAME)

Recombinant Antibody
Catalog # APR11017

Product Information

Application	FC, Kinetics, Animal Model
Primary Accession	P78395
Reactivity	Human, Mouse
Clonality	Monoclonal
Isotype	IgG1
Calculated MW	57890

Additional Information

Target/Specificity	PRAME
Endotoxin Conjugation	Unconjugated
Expression system	CHO Cell
Format	Purified monoclonal antibody supplied in PBS, pH6.0, without preservative. This antibody is purified through a protein A column.

Protein Information

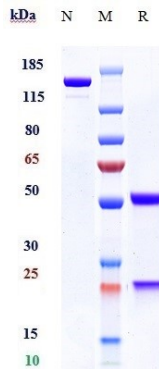
Name	PRAME {ECO:0000303 PubMed:9047241, ECO:0000312 HGNC:HGNC:9336}
Function	Substrate-recognition component of a Cul2-RING (CRL2) E3 ubiquitin-protein ligase complex, which mediates ubiquitination of target proteins, leading to their degradation (PubMed: 21822215 , PubMed: 26138980). The CRL2(PRAME) complex mediates ubiquitination and degradation of truncated MSRB1/SEPX1 selenoproteins produced by failed UGA/Sec decoding (PubMed: 26138980). In the nucleus, the CRL2(PRAME) complex is recruited to epigenetically and transcriptionally active promoter regions bound by nuclear transcription factor Y (NFY) and probably plays a role in chromatin regulation (PubMed: 21822215). Functions as a transcriptional repressor, inhibiting the signaling of retinoic acid through the retinoic acid receptors RARA, RARB and RARG; prevents retinoic acid-induced cell proliferation arrest, differentiation and apoptosis (PubMed: 16179254).
Cellular Location	Nucleus. Chromosome. Cytoplasm Golgi apparatus. Cell membrane. Note=Associates with chromatin; specifically enriched at transcriptionally active promoters that are also bound by nuclear transcription factor Y (composed of NFYA, NFYB and NFYC) and at enhancers (PubMed:21822215).

Recruited to the Golgi apparatus in response to interferon gamma (IFNG) treatment (PubMed:23460923).

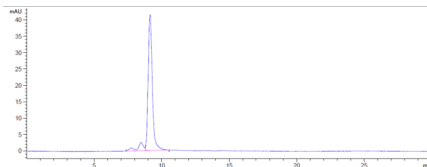
Tissue Location

Expressed in testis. Detected in samples of kidney, brain and skin.

Images



Anti-PRAME Reference Antibody (Eureka patent anti-PRAME) on SDS-PAGE under reducing (R) condition. The gel was stained with Coomassie Blue. The purity of the protein is greater than 90%



The purity of Anti-PRAME Reference Antibody (Eureka patent anti-PRAME) is more than 95% ,determined by SEC-HPLC.

Please note: All products are 'FOR RESEARCH USE ONLY. NOT FOR USE IN DIAGNOSTIC OR THERAPEUTIC PROCEDURES'.