

Anti-RHD / CD240d Reference Antibody (LFB Anti-RhD)

Recombinant Antibody

Catalog # APR11022

Product Information

Application	FC, Kinetics, Animal Model
Primary Accession	Q02161
Reactivity	Human
Clonality	Monoclonal
Isotype	IgG1
Calculated MW	45211

Additional Information

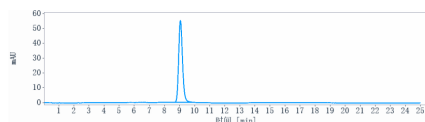
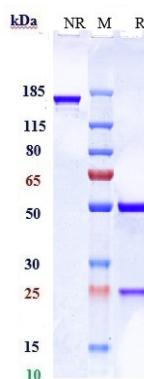
Target/Specificity	RHD / CD240d
Endotoxin	
Conjugation	Unconjugated
Expression system	CHO Cell
Format	Purified monoclonal antibody supplied in PBS, pH6.0, without preservative. This antibody is purified through a protein A column.

Protein Information

Name	RHD
Function	May be part of an oligomeric complex which is likely to have a transport or channel function in the erythrocyte membrane.
Cellular Location	Cell membrane; Multi-pass membrane protein
Tissue Location	Restricted to tissues or cell lines expressing erythroid characters

Images

Anti-RHD / CD240d Reference Antibody (LFB Anti-RhD) on SDS-PAGE under reducing (R) condition. The gel was stained with Coomassie Blue. The purity of the protein is greater than 95%



The purity of Anti-RHD / CD240d Reference Antibody (LFB Anti-RhD) is more than 98.9% ,determined by SEC-HPLC.

Please note: All products are 'FOR RESEARCH USE ONLY. NOT FOR USE IN DIAGNOSTIC OR THERAPEUTIC PROCEDURES'.