

Anti-ROBO1 Reference Antibody (Asclepius Technology patent anti-Robo1 CAR)

Recombinant Antibody
Catalog # APR11023

Product Information

Application	FC, Kinetics, Animal Model
Primary Accession	Q9Y6N7
Reactivity	Human
Clonality	Monoclonal
Isotype	IgG1
Calculated MW	180930

Additional Information

Target/Specificity	ROBO1
Endotoxin Conjugation	Unconjugated
Expression system	CHO Cell
Format	Purified monoclonal antibody supplied in PBS, pH6.0, without preservative. This antibody is purified through a protein A column.

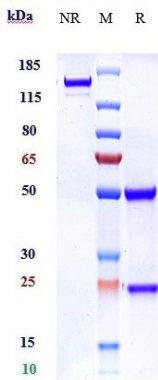
Protein Information

Name	ROBO1
Synonyms	DUTT1
Function	Receptor for SLIT1 and SLIT2 that mediates cellular responses to molecular guidance cues in cellular migration, including axonal navigation at the ventral midline of the neural tube and projection of axons to different regions during neuronal development (PubMed: 10102268 , PubMed: 24560577). Interaction with the intracellular domain of FLRT3 mediates axon attraction towards cells expressing NTN1 (PubMed: 24560577). In axon growth cones, the silencing of the attractive effect of NTN1 by SLIT2 may require the formation of a ROBO1-DCC complex (By similarity). Plays a role in the regulation of cell migration via its interaction with MYO9B; inhibits MYO9B-mediated stimulation of RHOA GTPase activity, and thereby leads to increased levels of active, GTP-bound RHOA (PubMed: 26529257). May be required for lung development (By similarity).
Cellular Location	Cell membrane; Single-pass type I membrane protein. Cell projection, axon {ECO:0000250 UniProtKB:O89026}. Endoplasmic reticulum-Golgi

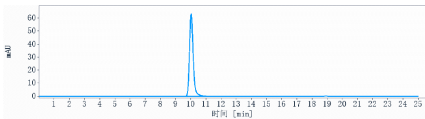
intermediate compartment membrane {ECO:0000250 | UniProtKB:O55005};
Single-pass membrane protein {ECO:0000250 | UniProtKB:O55005}
Note=Detected at growth cones in thalamus neurons. Detected at growth
cones in thalamus neurons (By similarity). PRRG4 prevents cell surface
location and both colocalize in the Endoplasmic reticulum/Golgi adjacent to
the cell nucleus (By similarity) {ECO:0000250 | UniProtKB:O55005,
ECO:0000250 | UniProtKB:O89026}

Tissue Location Widely expressed, with exception of kidney.

Images



Anti-ROBO1 Reference Antibody (Asclepius Technology patent anti-Robo1 CAR) on SDS-PAGE under reducing (R) condition. The gel was stained with Coomassie Blue. The purity of the protein is greater than 95%



The purity of Anti-ROBO1 Reference Antibody (Asclepius Technology patent anti-Robo1 CAR) is more than 95% ,determined by SEC-HPLC.

Please note: All products are 'FOR RESEARCH USE ONLY. NOT FOR USE IN DIAGNOSTIC OR THERAPEUTIC PROCEDURES'.