

# Anti-RSPO1 Reference Antibody (Oncomed patent anti-RSPO1)

Recombinant Antibody  
Catalog # APR11024

## Product Information

Application	FC, Kinetics, Animal Model
Primary Accession	<a href="#">Q2MKA7</a>
Reactivity	Human, Mouse
Clonality	Monoclonal
Isotype	IgG1
Calculated MW	28959

## Additional Information

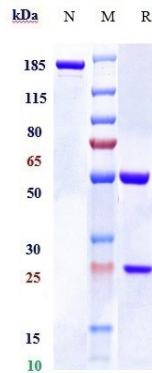
Target/Specificity	RSPO1
Endotoxin Conjugation	Unconjugated
Expression system	CHO Cell
Format	Purified monoclonal antibody supplied in PBS, pH6.0, without preservative. This antibody is purified through a protein A column.

## Protein Information

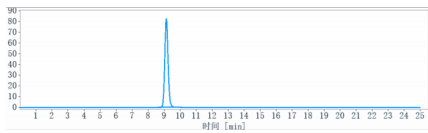
Name	RSPO1
Function	Activator of the canonical Wnt signaling pathway by acting as a ligand for LGR4-6 receptors (PubMed: <a href="#">29769720</a> ). Upon binding to LGR4-6 (LGR4, LGR5 or LGR6), LGR4-6 associate with phosphorylated LRP6 and frizzled receptors that are activated by extracellular Wnt receptors, triggering the canonical Wnt signaling pathway to increase expression of target genes. Also regulates the canonical Wnt/beta-catenin- dependent pathway and non-canonical Wnt signaling by acting as an inhibitor of ZNRF3, an important regulator of the Wnt signaling pathway. Acts as a ligand for frizzled FZD8 and LRP6. May negatively regulate the TGF-beta pathway. Has a essential roles in ovary determination. Regulates Wnt signaling by antagonizing DKK1/KREM1- mediated internalization of LRP6 through an interaction with KREM1 (PubMed: <a href="#">17804805</a> ).
Cellular Location	Secreted. Nucleus {ECO:0000250 UniProtKB:Q9Z132} Note=Seems to mainly localize to nucleoli {ECO:0000250 UniProtKB:Q9Z132}
Tissue Location	Abundantly expressed in adrenal glands, ovary, testis, thyroid and trachea but

not in bone marrow, spinal cord, stomach, leukocytes colon, small intestine, prostate, thymus and spleen.

## Images



Anti-RSPO1 Reference Antibody (Oncomed patent anti-RSPO1) on SDS-PAGE under reducing (R) condition. The gel was stained with Coomassie Blue. The purity of the protein is greater than 90%



The purity of Anti-RSPO1 Reference Antibody (Oncomed patent anti-RSPO1) is more than 95% ,determined by SEC-HPLC.

Please note: All products are 'FOR RESEARCH USE ONLY. NOT FOR USE IN DIAGNOSTIC OR THERAPEUTIC PROCEDURES'.