

Anti-SERPINE1 Reference Antibody (Sanofi patent anti-PAI-1)

Recombinant Antibody
Catalog # APR11030

Product Information

Application	FC, Kinetics, Animal Model
Primary Accession	P05121
Reactivity	Human
Clonality	Monoclonal
Isotype	IgG1
Calculated MW	45060

Additional Information

Target/Specificity	SERPINE1
Endotoxin Conjugation	Unconjugated
Expression system	CHO Cell
Format	Purified monoclonal antibody supplied in PBS, pH6.0, without preservative. This antibody is purified through a protein A column.

Protein Information

Name	SERPINE1
Synonyms	PAI1, PLANH1
Function	Serine protease inhibitor. Inhibits TMPRSS7 (PubMed: 15853774). Is a primary inhibitor of tissue-type plasminogen activator (PLAT) and urokinase-type plasminogen activator (PLAU). As PLAT inhibitor, it is required for fibrinolysis down-regulation and is responsible for the controlled degradation of blood clots (PubMed: 17912461 , PubMed: 8481516 , PubMed: 9207454 , PubMed: 21925150). As PLAU inhibitor, it is involved in the regulation of cell adhesion and spreading (PubMed: 9175705). Acts as a regulator of cell migration, independently of its role as protease inhibitor (PubMed: 15001579 , PubMed: 9168821). It is required for stimulation of keratinocyte migration during cutaneous injury repair (PubMed: 18386027). It is involved in cellular and replicative senescence (PubMed: 16862142). Plays a role in alveolar type 2 cells senescence in the lung (By similarity). Is involved in the regulation of cementogenic differentiation of periodontal ligament stem cells, and regulates odontoblast differentiation and dentin formation during odontogenesis (PubMed: 25808697 , PubMed: 27046084).

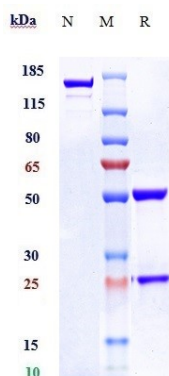
Cellular Location

Secreted.

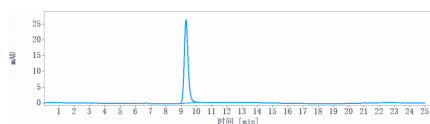
Tissue Location

Expressed in endothelial cells (PubMed:2430793, PubMed:3097076). Found in plasma, platelets, and hepatoma and fibrosarcoma cells.

Images



Anti-SERPINE1 Reference Antibody (Sanofi patent anti-PAI-1) on SDS-PAGE under reducing (R) condition. The gel was stained with Coomassie Blue. The purity of the protein is greater than 90%



The purity of Anti-SERPINE1 Reference Antibody (Sanofi patent anti-PAI-1) is more than 95% ,determined by SEC-HPLC.

Please note: All products are 'FOR RESEARCH USE ONLY. NOT FOR USE IN DIAGNOSTIC OR THERAPEUTIC PROCEDURES'.