

Anti-Shiga toxin (E.coli) Reference Antibody (setoxaximab)

Recombinant Antibody
Catalog # APR11032

Product Information

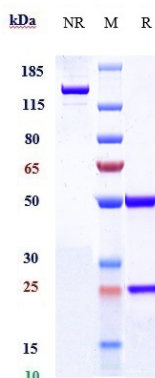
Application	FC, Kinetics, Animal Model
Primary Accession	NA
Reactivity	Human
Clonality	Monoclonal
Isotype	IgG1
Calculated MW	145 kDa

Additional Information

Target/Specificity	Shiga toxin (E.coli)
Endotoxin Conjugation	Unconjugated
Expression system	CHO Cell
Format	Purified monoclonal antibody supplied in PBS, pH6.0, without preservative. This antibody is purified through a protein A column.

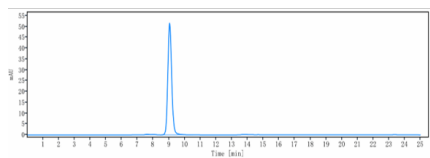
Protein Information

Images



Anti-Shiga toxin (E.coli) Reference Antibody (setoxaximab) on SDS-PAGE under reducing (R) condition. The gel was stained with Coomassie Blue. The purity of the protein is greater than 90%

The purity of Anti-Shiga toxin (E.coli) Reference Antibody



(setoxaximab) is more than 95% ,determined by SEC-HPLC.

Please note: All products are 'FOR RESEARCH USE ONLY. NOT FOR USE IN DIAGNOSTIC OR THERAPEUTIC PROCEDURES'.