

Anti-Siglec-15 / CD33L3 Reference Antibody (Medimmune patent anti-Siglec-15)

Recombinant Antibody
Catalog # APR11033

Product Information

Application	FC, Kinetics, Animal Model
Primary Accession	Q6ZMC9
Reactivity	Human
Clonality	Monoclonal
Isotype	IgG1
Calculated MW	35653

Additional Information

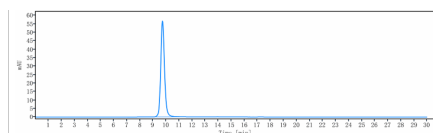
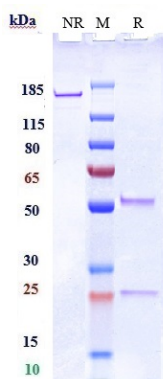
Target/Specificity	Siglec-15 / CD33L3
Endotoxin Conjugation	Unconjugated
Expression system	CHO Cell
Format	Purified monoclonal antibody supplied in PBS, pH6.0, without preservative. This antibody is purified through a protein A column.

Protein Information

Name	SIGLEC15
Synonyms	CD33L3
Function	Binds sialylated glycoproteins.
Cellular Location	Membrane; Single-pass type I membrane protein.
Tissue Location	Expressed in macrophage and/or dendritic cells of spleen and lymph nodes

Images

Anti-Siglec-15 / CD33L3 Reference Antibody (Medimmune patent anti-Siglec-15) on SDS-PAGE under reducing (R) condition. The gel was stained with Coomassie Blue. The purity of the protein is greater than 95%



The purity of Anti-Siglec-15 / CD33L3 Reference Antibody (Medimmune patent anti-Siglec-15) is more than 95%, determined by SEC-HPLC.

Please note: All products are 'FOR RESEARCH USE ONLY. NOT FOR USE IN DIAGNOSTIC OR THERAPEUTIC PROCEDURES'.