

Anti-TEM7R / PLXDC2 Reference Antibody (Fox Chase patent anti-TEM7R)

Recombinant Antibody

Catalog # APR11043

Product Information

Application	FC, Kinetics, Animal Model
Primary Accession	Q6UX71
Reactivity	Human, Mouse
Clonality	Monoclonal
Isotype	IgG1
Calculated MW	59583

Additional Information

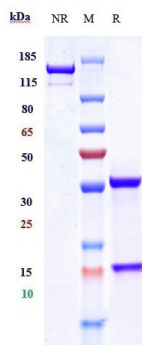
Target/Specificity	TEM7R / PLXDC2
Endotoxin Conjugation	Unconjugated
Expression system	CHO Cell
Format	Purified monoclonal antibody supplied in PBS, pH6.0, without preservative. This antibody is purified through a protein A column.

Protein Information

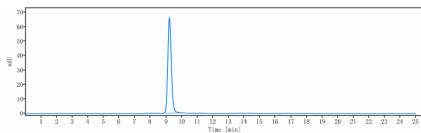
Name	PLXDC2
Synonyms	TEM7R
Function	May play a role in tumor angiogenesis.
Cellular Location	Membrane; Single-pass type I membrane protein
Tissue Location	Expressed in the endothelial cells of the stroma but not in the endothelial cells of normal colonic tissue

Images

Anti-TEM7R / PLXDC2 Reference Antibody (Fox Chase patent anti-TEM7R) on SDS-PAGE under reducing (R) condition. The gel was stained with Coomassie Blue. The



purity of the protein is greater than 90%



The purity of Anti-TEM7R / PLXDC2 Reference Antibody (Fox Chase patent anti-TEM7R) is more than 95% ,determined by SEC-HPLC.

Please note: All products are 'FOR RESEARCH USE ONLY. NOT FOR USE IN DIAGNOSTIC OR THERAPEUTIC PROCEDURES'.