

# Anti-TLR3 / CD283 Reference Antibody (CNTO5429)

Recombinant Antibody

Catalog # APR11046

## Product Information

---

<b>Application</b>	FC, Kinetics, Animal Model
<b>Primary Accession</b>	<a href="#">O15455</a>
<b>Reactivity</b>	Human
<b>Clonality</b>	Monoclonal
<b>Isotype</b>	IgG2SA
<b>Calculated MW</b>	103829

## Additional Information

---

<b>Target/Specificity</b>	TLR3 / CD283
<b>Endotoxin Conjugation</b>	Unconjugated
<b>Expression system</b>	CHO Cell
<b>Format</b>	Purified monoclonal antibody supplied in PBS, pH6.0, without preservative. This antibody is purified through a protein A column.

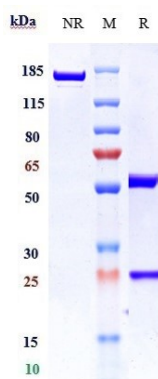
## Protein Information

---

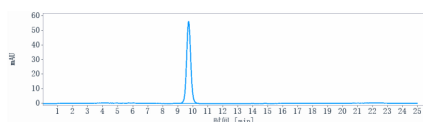
<b>Name</b>	TLR3 ( <a href="#">HGNC:11849</a> )
<b>Function</b>	Key component of innate and adaptive immunity. TLRs (Toll- like receptors) control host immune response against pathogens through recognition of molecular patterns specific to microorganisms. TLR3 is a nucleotide-sensing TLR which is activated by double-stranded RNA, a sign of viral infection. Acts via the adapter TRIF/TICAM1, leading to NF-kappa-B activation, IRF3 nuclear translocation, cytokine secretion and the inflammatory response.
<b>Cellular Location</b>	Endoplasmic reticulum membrane; Single-pass type I membrane protein. Endosome membrane. Early endosome
<b>Tissue Location</b>	Expressed at high level in placenta and pancreas. Also detected in CD11c+ immature dendritic cells. Only expressed in dendritic cells and not in other leukocytes, including monocyte precursors. TLR3 is the TLR that is expressed most strongly in the brain, especially in astrocytes, glia, and neurons

## Images

---



Anti-TLR3 / CD283 Reference Antibody (CNTO5429) on SDS-PAGE under reducing (R) condition. The gel was stained with Coomassie Blue. The purity of the protein is greater than 95%



The purity of Anti-TLR3 / CD283 Reference Antibody (CNTO5429) is more than 95% ,determined by SEC-HPLC.

Please note: All products are 'FOR RESEARCH USE ONLY. NOT FOR USE IN DIAGNOSTIC OR THERAPEUTIC PROCEDURES'.