

# Anti-TMEFF2 Reference Antibody (Janssen patent anti-TMEFF2)

Recombinant Antibody  
Catalog # APR11050

## Product Information

---

<b>Application</b>	FC, Kinetics, Animal Model
<b>Primary Accession</b>	<a href="#">Q9UIK5</a>
<b>Reactivity</b>	Human
<b>Clonality</b>	Monoclonal
<b>Isotype</b>	IgG1
<b>Calculated MW</b>	41428

## Additional Information

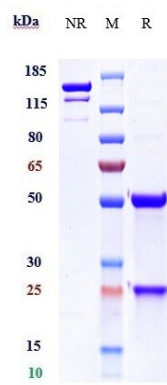
---

<b>Target/Specificity</b>	TMEFF2
<b>Endotoxin Conjugation</b>	Unconjugated
<b>Expression system</b>	CHO Cell
<b>Format</b>	Purified monoclonal antibody supplied in PBS, pH6.0, without preservative. This antibody is purified through a protein A column.

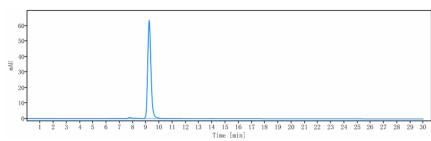
## Protein Information

---

<b>Name</b>	TMEFF2
<b>Synonyms</b>	HPP1, TENB2, TPEF
<b>Function</b>	May be a survival factor for hippocampal and mesencephalic neurons. The shedded form up-regulates cancer cell proliferation, probably by promoting ERK1/2 phosphorylation.
<b>Cellular Location</b>	[Isoform 1]: Membrane; Single-pass type I membrane protein [Isoform 3]: Secreted.
<b>Tissue Location</b>	Highly expressed in adult and fetal brain, spinal cord and prostate. Expressed in all brain regions except the pituitary gland, with highest levels in amygdala and corpus callosum. Expressed in the pericryptal myofibroblasts and other stromal cells of normal colonic mucosa. Expressed in prostate carcinoma. Down-regulated in colorectal cancer. Present in Alzheimer disease plaques (at protein level). Isoform 3 is expressed weakly in testis and at high levels in normal and cancerous prostate.



Anti-TMEFF2 Reference Antibody (Janssen patent anti-TMEFF2) on SDS-PAGE under reducing (R) condition. The gel was stained with Coomassie Blue. The purity of the protein is greater than 90%



The purity of Anti-TMEFF2 Reference Antibody (Janssen patent anti-TMEFF2) is more than 95% ,determined by SEC-HPLC.

Please note: All products are 'FOR RESEARCH USE ONLY. NOT FOR USE IN DIAGNOSTIC OR THERAPEUTIC PROCEDURES'.