

IL-21 Receptor Antibody

Catalog # ASC10144

Product Information

Application	WB, E
Primary Accession	Q9HBE5
Other Accession	NP_068570 , 11141869
Reactivity	Human, Mouse, Rat
Host	Rabbit
Clonality	Polyclonal
Isotype	IgG
Calculated MW	59130
Conjugate	Unconjugated
Application Notes	IL-21 receptor antibody can be used for detection of IL-21 receptor by Western blot at 1 µg/mL. An approximately 60 kDa band can be detected.

Additional Information

Gene ID	50615
Other Names	IL-21 Receptor Antibody: NILR, CD360, NILR, UNQ3121/PRO10273, Interleukin-21 receptor, Novel interleukin receptor, IL-21 receptor, interleukin 21 receptor
Target/Specificity	IL21R;
Reconstitution & Storage	IL-21 Receptor antibody can be stored at 4°C for three months and -20°C, stable for up to one year. As with all antibodies care should be taken to avoid repeated freeze thaw cycles. Antibodies should not be exposed to prolonged high temperatures.
Precautions	IL-21 Receptor Antibody is for research use only and not for use in diagnostic or therapeutic procedures.

Protein Information

Name	IL21R
Synonyms	NILR
Function	This is a receptor for interleukin-21.
Cellular Location	Membrane; Single-pass type I membrane protein.
Tissue Location	Selectively expressed in lymphoid tissues. Most highly expressed in thymus and spleen

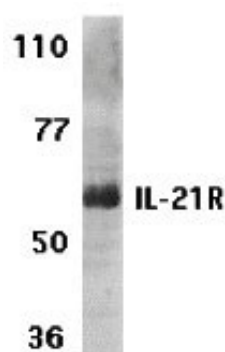
Background

IL-21 Receptor Antibody: A novel cytokine related to IL2 and IL15 was recently identified and designated IL-21. The receptor for IL-21 (IL-21R, also termed NILR for novel Interleukin receptor) is a new member of the class I cytokine receptor family. IL-21R forms a complex with the common cytokine receptor gamma chain, gammac, and mediates IL-21 signaling. Both IL-21R and the gc are necessary for the IL-21 function. IL-21 and its receptor activate JAK-STAT signaling pathway. IL-21R is expressed in spleen, thymus, natural killer (NK), T and B cell lines. IL-21 plays a role in the proliferation and maturation of NK, B and T cell populations.

References

Parrish-Novak J, Dillon SR, Nelson A, et al. Interleukin 21 and its receptor are involved in NK cell expansion and regulation of lymphocyte function. *Nature*. 2000;408(6808):57-63.
Ozaki K, Kikly K, Michalovich D, et al. Cloning of a type I cytokine receptor most related to the IL-2 receptor β chain. *Proc Natl Acad Sci USA*. 2000;97(21):11439-44.
Asao H, Okuyama C, Kumaki S, et al. the common γ -chain is an indispensable subunit of the IL-21 receptor complex. *J Immunol*. 2001;167(1):1-5.
Vosshenrich CA, Di Santo JP. Cytokines: IL-21 joins the $\gamma(c)$ -dependent network *Curr Biol*. 2001;11(5):R175-7.

Images



Western blot analysis of IL-21 receptor expression in human Raji cell lysate with IL-21 receptor antibody at 1 μ g /ml.

Please note: All products are 'FOR RESEARCH USE ONLY. NOT FOR USE IN DIAGNOSTIC OR THERAPEUTIC PROCEDURES'.