

Slitrk2 Antibody

Catalog # ASC10639

Product Information

Application	WB, IF, E, IHC-P
Primary Accession	Q9H156
Other Accession	Q9H156 , 46397026
Reactivity	Human, Mouse, Rat
Host	Rabbit
Clonality	Polyclonal
Isotype	IgG
Calculated MW	95404
Concentration (mg/ml)	1 mg/mL
Conjugate	Unconjugated
Application Notes	Slitrk2 antibody can be used for detection of Slitrk2 by Western blot at 1 - 2 μ g/mL. Antibody can also be used for immunohistochemistry starting at 2.5 μ g/mL. For immunofluorescence start at 20 μ g/mL.

Additional Information

Gene ID	84631
Other Names	SLIT and NTRK-like protein 2, SLITRK2, CXorf2, KIAA1854, SLITL1
Target/Specificity	SLITRK2; This antibody is predicted to have no cross-reactivity to other Slitrk proteins.
Reconstitution & Storage	Slitrk2 antibody can be stored at 4°C for three months and -20°C, stable for up to one year. As with all antibodies care should be taken to avoid repeated freeze thaw cycles. Antibodies should not be exposed to prolonged high temperatures.
Precautions	Slitrk2 Antibody is for research use only and not for use in diagnostic or therapeutic procedures.

Protein Information

Name	SLITRK2
Synonyms	CXorf2, KIAA1854, SLITL1
Function	It is involved in synaptogenesis and promotes excitatory synapse differentiation (PubMed: 27273464 , PubMed: 27812321 , PubMed: 35840571). Suppresses neurite outgrowth (By similarity). Involved in the negative regulation of NTRK2 (PubMed: 35840571).
Cellular Location	Membrane; Single-pass type I membrane protein. Cell membrane. Cell projection, dendrite

Tissue Location

Expressed predominantly in the cerebral cortex of the brain but also at low levels in the spinal cord and medulla. Also expressed in some astrocytic brain tumors such as astrocytomas, oligodendrogliomas, glioblastomas, gangliogliomas and primitive neuroectodermal tumors.

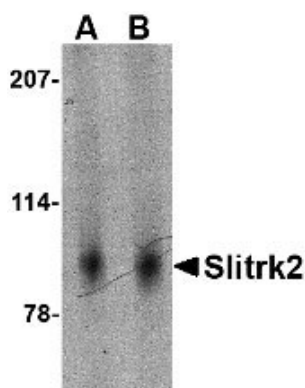
Background

Slitrk2 Antibody: SLIT and NTRK-like family 2 (Slitrk2) is a member a protein family consisting of six homologous transmembrane proteins (Slitrk1-6) that share two conserved leucine-rich repeat domains in the extracellular domain and have significant homology to Slit, a secreted axonal growth-controlling protein. These proteins are also homologous to trk neurotrophin receptors in their intracellular domains. Expression of Slitrk proteins is highly restricted to neural and brain tumor tissues, but varies within the family. For example, Slitrk2 is expressed primarily in neurons in the ventricular layer of the brain. Like every other Slitrk protein except Slitrk1, overexpression of Slitrk2 inhibited neurite outgrowth in cultured neurons. Deletion analysis indicated that the functional difference between Slitrk2 and Slitrk1 is within their intracellular domains. At least two isoforms of this protein are known to exist.

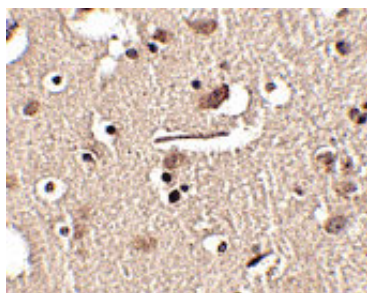
References

Aruga J and Mikoshiba K. Identification and characterization of Slitrk, a novel transmembrane protein family controlling neurite outgrowth. *Mol. Cell Neurosci.*2003; 24:117-29.
Aruga J, Yokota N, and Mikoshiba K. Human SLITRK family genes: genomic organization and expression profiling in normal and brain tumor tissue. *Gene*2003; 315:87-94.

Images

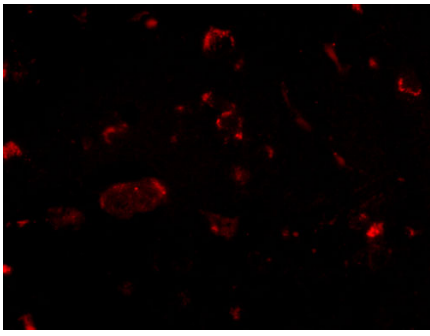


Western blot analysis of Slitrk2 in mouse brain tissue lysate with Slitrk2 antibody at (A) 1 and (B) 2 µg/mL.



Immunohistochemistry of Slitrk2 in human brain tissue with Slitrk2 antibody at 2.5 µg/mL.

Immunofluorescence of slitrk2 in human brain tissue with slitrk2 antibody at 20 µg/mL.



Please note: All products are 'FOR RESEARCH USE ONLY. NOT FOR USE IN DIAGNOSTIC OR THERAPEUTIC PROCEDURES'.