

# PRTFDC1 Antibody

Catalog # ASC10754

## Product Information

---

<b>Application</b>	WB, E
<b>Primary Accession</b>	<a href="#">Q9NRG1</a>
<b>Other Accession</b>	<a href="#">NP_064585</a> , <a href="#">9910262</a>
<b>Reactivity</b>	Human, Rat
<b>Host</b>	Rabbit
<b>Clonality</b>	Polyclonal
<b>Isotype</b>	IgG
<b>Calculated MW</b>	25674
<b>Concentration (mg/ml)</b>	1 mg/mL
<b>Conjugate</b>	Unconjugated
<b>Application Notes</b>	PRTFDC1 antibody can be used for detection of PRTFDC1 by Western blot at 1 $\mu$ g/mL.

## Additional Information

---

<b>Gene ID</b>	56952
<b>Other Names</b>	Phosphoribosyltransferase domain-containing protein 1, PRTFDC1, HHGP
<b>Target/Specificity</b>	PRTFDC1;
<b>Reconstitution &amp; Storage</b>	PRTFDC1 antibody can be stored at 4°C for three months and -20°C, stable for up to one year. As with all antibodies care should be taken to avoid repeated freeze thaw cycles. Antibodies should not be exposed to prolonged high temperatures.
<b>Precautions</b>	PRTFDC1 Antibody is for research use only and not for use in diagnostic or therapeutic procedures.

## Protein Information

---

<b>Name</b>	PRTFDC1
<b>Synonyms</b>	HHGP
<b>Function</b>	Has low, barely detectable phosphoribosyltransferase activity (in vitro). Binds GMP, IMP and alpha-D-5-phosphoribosyl 1-pyrophosphate (PRPP). Is not expected to contribute to purine metabolism or GMP salvage.

## Background

---

PRTFDC1 Antibody: Phosphoribosyl transferase domain containing 1 (PRTFDC1) is highly homologous to the

hypoxanthine phosphoribosyltransferase (HPRT1) and may have arisen from a gene duplication event of a common ancestor gene. Recently, it was shown that CpG islands in the PRTFDC1 promoter could be hypermethylated in ovarian cancers and oral squamous-cell carcinomas (OSCC), leading to gene silencing. Restoration of PRTFDC1 expression in OSCC inhibited cell growth in colony-formation assays, while knockdown of PRTFDC1 expression in OSCC that expressed the gene promoted cell growth. These results suggest that PRTFDC1 can act as a tumor-suppressor gene. At least three isoforms of PRTFDC1 are known to exist.

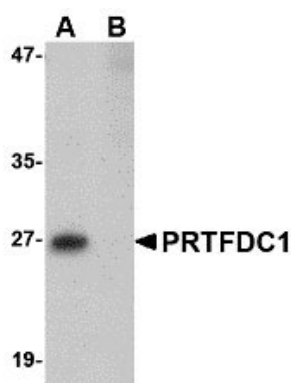
## References

---

Nicklas JA. Pseudogenes of the human HPRT1 gene. *Environ. Mol. Mutagen*2006; 47:212-8.  
Keebaugh AC, Sullivan RT, NISC Comparative Sequencing Program, et al. Gene duplication and inactivation in the HPRT gene family. *Genomics*2007; 89:134-42.  
Cai LY, Abe M, Izumi S, et al. Identification of PRTFDC1 silencing and aberrant promoter methylation of GPR150, ITGA8 and HOXD11 in ovarian cancers. *Life Sci.*2007; 80:1458-65.  
Suzuki E, Imoto I, Pimkhaokham A, et al. PRTFDC1, a possible tumor-suppressor gene, is frequently silenced in oral squamous-cell carcinoma by aberrant promoter hypermethylation. *Oncogene*2007; 26:7921-32.

## Images

---



Please note: All products are 'FOR RESEARCH USE ONLY. NOT FOR USE IN DIAGNOSTIC OR THERAPEUTIC PROCEDURES'.