

# RHBDD2 Antibody

Catalog # ASC11033

## Product Information

---

<b>Application</b>	WB, IF, E
<b>Primary Accession</b>	<a href="#">Q6NTE9</a>
<b>Other Accession</b>	<a href="#">NP_001035546</a> , <a href="#">94818790</a>
<b>Reactivity</b>	Human, Mouse, Rat
<b>Host</b>	Rabbit
<b>Clonality</b>	Polyclonal
<b>Isotype</b>	IgG
<b>Calculated MW</b>	39202
<b>Concentration (mg/ml)</b>	1 mg/mL
<b>Conjugate</b>	Unconjugated
<b>Application Notes</b>	RHBDD2 antibody can be used for detection of RHBDD2 by Western blot at 1 - 2 $\mu$ g/mL. For immunofluorescence start at 20 $\mu$ g/mL.

## Additional Information

---

<b>Gene ID</b>	57414
<b>Other Names</b>	Rhomboid domain-containing protein 2, RHBDD2, RHBDL7
<b>Target/Specificity</b>	RHBDD2;
<b>Reconstitution &amp; Storage</b>	RHBDD2 antibody can be stored at 4°C for three months and -20°C, stable for up to one year. As with all antibodies care should be taken to avoid repeated freeze thaw cycles. Antibodies should not be exposed to prolonged high temperatures.
<b>Precautions</b>	RHBDD2 Antibody is for research use only and not for use in diagnostic or therapeutic procedures.

## Protein Information

---

<b>Name</b>	RHBDD2
<b>Synonyms</b>	RHBDL7
<b>Cellular Location</b>	Golgi apparatus, cis-Golgi network membrane; Multi-pass membrane protein

## Background

---

RHBDD2 Antibody: The Rhomboid family of proteins is made up of several widely conserved polytopic membrane serine proteases that play roles in growth and development. Little is known about the role of RHBDD2. Its overexpression in breast carcinoma appears to be an indicator of poor prognosis and may play

a role in breast cancer progression. The related proteins RHBDD1 and RHBDD3 are both involved in the regulation of apoptosis, suggesting that RHBDD2 may also be involved in the modulation of apoptotic activity.

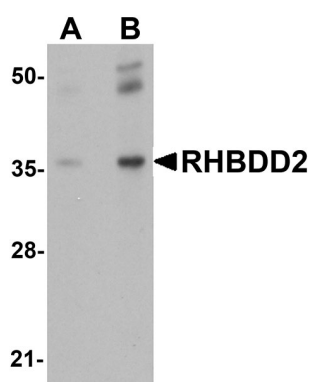
## References

---

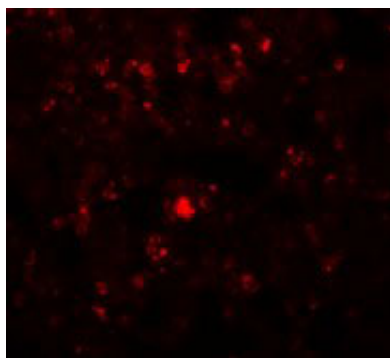
Koonin EV, Makarova KS, Rogozin IB, et al. The rhomboids: a nearly ubiquitous family of intramembrane serine proteases that probably evolved by multiple horizontal gene transfers. *Genome Biol.*2003; 4:R19.  
Abba MC, Sun H, Hawkins KA, et al. Breast cancer molecular signatures as determined by SAGE: correlation with lymph node status. *Mol. Cancer Res.*2007; 5:881-90.  
Abba MC, Lacunza E, Nunez MI, et al. Rhomboid domain containing 2 (RHBDD2): a novel cancer-related gene over-expressed in breast cancer. *Biochim. Biophys. Acta*2009; 1792:988-97.  
Wang Y, Guan X, Fok KL, et al. A novel member of the rhomboid family, RHBDD1, regulates BIK-mediated apoptosis. *Cell Mol. Life Sci.*2008; 65:3822-9.

## Images

---



Western blot analysis of RHBDD2 in rat lung tissue lysate with RHBDD2 antibody at (A) 1 and (B) 2  $\mu$ g/mL.



Immunofluorescence of RHBDD2 in Rat Lung cells with RHBDD2 antibody at 20  $\mu$ g/mL.

Please note: All products are 'FOR RESEARCH USE ONLY. NOT FOR USE IN DIAGNOSTIC OR THERAPEUTIC PROCEDURES'.