

ZHANGFEI Antibody

Catalog # ASC11286

Product Information

| | |
|------------------------------|-------------------------------------------------------------------------------------------------------------------------------------------------------------|
| Application | WB, ICC, E |
| Primary Accession | Q9NS37 |
| Other Accession | NP_001034707 , 88900495 |
| Reactivity | Human, Mouse |
| Host | Rabbit |
| Clonality | Polyclonal |
| Isotype | IgG |
| Calculated MW | 37134 |
| Concentration (mg/ml) | 1 mg/mL |
| Conjugate | Unconjugated |
| Application Notes | ZHANGFEI antibody can be used for detection of ZHANGFEI by Western blot at 1 µg/mL. Antibody can also be used for immunocytochemistry starting at 10 µg/mL. |

Additional Information

| | |
|-------------------------------------|--------------------------------------------------------------------------------------------------------------------------------------------------------------------------------------------------------------------------------------------------|
| Gene ID | 58487 |
| Other Names | CREB/ATF bZIP transcription factor, Host cell factor-binding transcription factor Zhangfei, HCF-binding transcription factor Zhangfei, CREBZF, ZF |
| Target/Specificity | CREBZF; |
| Reconstitution & Storage | ZHANGFEI antibody can be stored at 4°C for three months and -20°C, stable for up to one year. As with all antibodies care should be taken to avoid repeated freeze thaw cycles. Antibodies should not be exposed to prolonged high temperatures. |
| Precautions | ZHANGFEI Antibody is for research use only and not for use in diagnostic or therapeutic procedures. |

Protein Information

| | |
|-----------------|------------------------------------------------------------------------------------------------------------------------------------------------------------------------------------------------------------------------------------------------------------------------------------------------------------------------------------------------------------------------|
| Name | CREBZF |
| Synonyms | ZF |
| Function | Strongly activates transcription when bound to HCFC1. Suppresses the expression of HSV proteins in cells infected with the virus in a HCFC1-dependent manner. Also suppresses the HCFC1-dependent transcriptional activation by CREB3 and reduces the amount of CREB3 in the cell. Able to down-regulate expression of some cellular genes in CREBZF-expressing cells. |

| | |
|--------------------------|----------------------------------------------------------------------------------------------------------------------------------------------------------------------------------------------------------------------------------------------------------|
| Cellular Location | Nucleus. Note=Colocalizes in promyelocytic leukemia protein nuclear bodies (PML- NB) with CREB3 and HCFC1 |
| Tissue Location | In adults, expressed most abundantly in heart, liver and skeletal muscle, moderately abundant in kidney and pancreas, and barely detectable in lung. In fetal tissues, expressed most abundantly in kidney and very low amounts in heart, lung and liver |

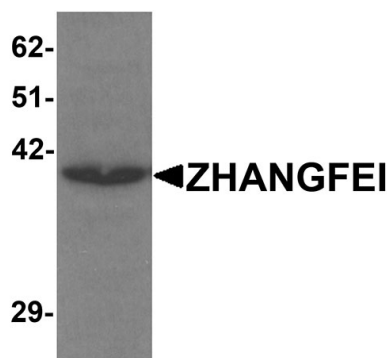
Background

ZHANGFEI Antibody: ZHANGFEI, also known as ZF, is a basic region-leucine zipper transcriptional factor that has been implicated in herpes virus infection cycle and related cellular processes. ZHANGFEI protein has a negatively charged active N-terminus, a leucine zipper of six heptad leucine repeats separated by a conserved six amino acid spacer, a basic domain and a bZIP region. ZHANGFEI strongly activates transcription and suppresses the expression of HSV proteins in cells infected with the virus in a HCFC1 dependent manner. It also suppresses the HCFC1 dependent transcriptional activation by CREB3 and reduces the amount of CREB3 in the cell.

References

- Hogan MR, Cockram GP and Lu R. Cooperative interaction of Zhangfei and ATF4 in transactivation of the cyclic AMP response element. *FEBS Lett.* 2006; 580:58-62.
- Cockram GP, Hogan MR, Burnett HF, et al. Identification and characterization of the DNA-binding properties of a Zhangfei homologue in Japanese pufferfish, *Takifugu rubripes*. *Biochem. Biophys. Res. Commun.* 2005; 339:1238-45.
- Lu R and Misra V. Zhangfei: a second cellular protein interacts with herpes simplex virus accessory factor HCF in a manner similar to Luman and VP16. *Nucleic Acids Res.* 2000; 28:2446-54.
- Misra V, Rapin N, Akhova O, et al. 2005. Zhangfei is a potent and specific inhibitor of the host cell factor-binding transcription factor Luman. *J. Biol. Chem.* 2005; 280:15257-66.

Images



Western blot analysis of ZHANGFEI in K562 cell lysate with ZHANGFEI antibody at 1 µg/mL.



Immunocytochemistry of ZHANGFEI in K562 cells with ZHANGFEI antibody at 10 µg/mL.

Please note: All products are 'FOR RESEARCH USE ONLY. NOT FOR USE IN DIAGNOSTIC OR THERAPEUTIC PROCEDURES'.