

Paralemmin3 Antibody

Catalog # ASC11363

Product Information

Application	WB, IF, ICC, E
Primary Accession	A6NDB9
Other Accession	NP_001138500 , 222537747
Reactivity	Human
Host	Rabbit
Clonality	Polyclonal
Isotype	IgG
Calculated MW	71695
Concentration (mg/ml)	1 mg/mL
Conjugate	Unconjugated
Application Notes	Paralemmin3 antibody can be used for detection of Paralemmin3 by Western blot at 1 μ g/mL. Antibody can also be used for immunocytochemistry starting at 5 μ g/mL. For immunofluorescence start at 20 μ g/mL.

Additional Information

Gene ID	342979
Other Names	Paralemmin-3, PALM3
Target/Specificity	PALM3; At least two isoforms of Paralemmin3 are known to exist; this antibody will only detect the longer isoform
Reconstitution & Storage	Paralemmin3 antibody can be stored at 4°C for three months and -20°C, stable for up to one year. As with all antibodies care should be taken to avoid repeated freeze thaw cycles. Antibodies should not be exposed to prolonged high temperatures.
Precautions	Paralemmin3 Antibody is for research use only and not for use in diagnostic or therapeutic procedures.

Protein Information

Name	PALM3
Function	ATP-binding protein, which may act as a adapter in the Toll- like receptor (TLR) signaling.
Cellular Location	Cytoplasm. Cell membrane; Lipid-anchor

Background

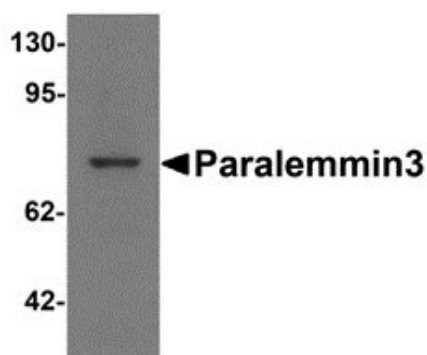
Paralemmmin3 Antibody: Paralemmmin3 is a recently identified protein that associates with the single immunoglobulin IL-1 receptor-related molecule (SIGIRR), a negative regulator of Toll-like receptor-interleukin 1 receptor signaling. Silencing of Paralemmmin3 expression by RNAi inhibited the release of inflammatory cytokines in A549 cells after stimulation with lipopolysaccharide (LPS), suggesting Paralemmmin3 may function as an adaptor in the LPS-TLR4 signaling pathway.

References

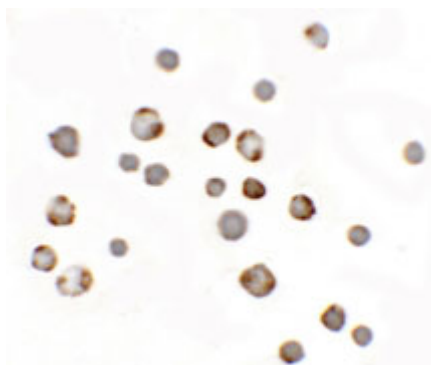
Chen X, Wu X, Zhao Y, et al. A novel binding protein of single immunoglobulin IL-1 receptor-related molecule: Paralemmmin-3. *Biochem. Biophys. Res. Commun.* 2011; 404:1029-33

Wald D, Qin J, Zhao Z, et al. SIGIRR, a negative regulator of Toll-like receptor-interleukin 1 receptor signaling. *Nat. Immunol.* 2003; 4:920-7.

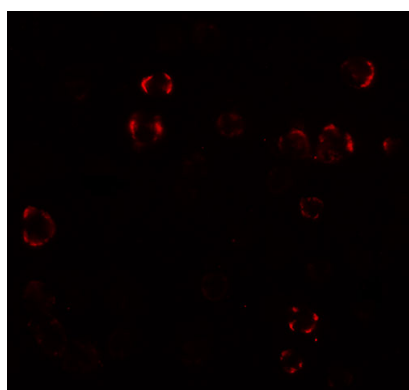
Images



Western blot analysis of Paralemmmin3 in MCF7 cell lysate with Paralemmmin3 antibody at 1 μ g/mL.



Immunocytochemistry of Paralemmmin 3 in MCF7 cells with Paralemmmin 3 antibody at 5 μ g/mL.



Immunofluorescence of Paralemmmin 3 in MCF7 cells with Paralemmmin 3 antibody at 20 μ g/mL.