

RASSF6 Antibody

Catalog # ASC11390

Product Information

Application	WB, E
Primary Accession	Q6ZTQ3
Other Accession	NP_803876 , 41393610
Reactivity	Human
Host	Rabbit
Clonality	Polyclonal
Isotype	IgG
Calculated MW	43384
Concentration (mg/ml)	1 mg/mL
Conjugate	Unconjugated
Application Notes	RASSF6 antibody can be used for detection of RASSF6 by Western blot at 1 μ g/mL.

Additional Information

Gene ID	166824
Other Names	Ras association domain-containing protein 6, RASSF6
Target/Specificity	RASSF6; At least four isoforms of RASSF6 are known to exist. RASSF6 antibody is predicted to not cross-react with other RASSF family members.
Reconstitution & Storage	RASSF6 antibody can be stored at 4°C for three months and -20°C, stable for up to one year. As with all antibodies care should be taken to avoid repeated freeze thaw cycles. Antibodies should not be exposed to prolonged high temperatures.
Precautions	RASSF6 Antibody is for research use only and not for use in diagnostic or therapeutic procedures.

Protein Information

Name	RASSF6
Function	Involved in the induction of apoptosis, through both caspase- dependent and caspase-independent pathways. May act as a Ras effector protein. May suppress the serum-induced basal levels of NF-kappa-B (By similarity).
Tissue Location	Highest expression in thymus, kidney and placenta. Also detected in colon, small intestine and lung. Tends to be down- regulated in 30-60% of tumors derived from breast, colon, kidney liver, rectum, pancreas, stomach and the thyroid gland compared to the normal counterpart.

Background

RASSF6 Antibody: RASSF family proteins are tumor suppressors that are frequently downregulated during the development of human cancer. RASSF6 (Ras association (RalGDS/AF-6) domain family member 6), a member of RASSF family, acts as a Ras effector protein / tumor suppressor. RASSF6 contains one Ras-associating domain and one SARA domain. It is involved in the induction of apoptosis, through both caspase-dependent and caspase-independent pathways. Defects in RASSF6 may facilitate viral NF- κ B pathway and may play a vital role in infection.

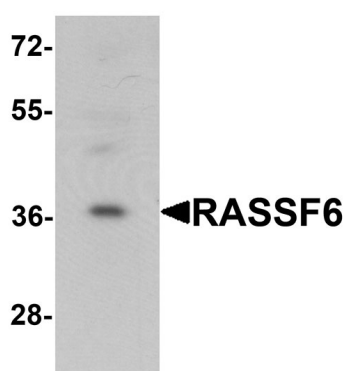
References

Van der Weyden L, Adams DJ. The Ras-association domain family (RASSF) members and their role in human tumorigenesis. *Biochim. Biophys. Acta* 2007; 1776:58-85

Allen NP, Donninger H, Vos MD, et al. RASSF6 is a novel member of the RASSF family of tumor suppressors. *Oncogene* 2007; 26:6203-11

Ikeda M, Hirabayashi S, Fujiwara N, et al. Ras-association domain family protein 6 induces apoptosis via both caspase-dependent and caspase-independent pathways. *Exp. Cell Res.* 2007; 313:1484-95

Images



Western blot analysis of RASSF6 in 293 cell lysate with RASSF6 antibody at 1 μ g/mL.

Please note: All products are 'FOR RESEARCH USE ONLY. NOT FOR USE IN DIAGNOSTIC OR THERAPEUTIC PROCEDURES'.