

YPEL3 Antibody

Catalog # ASC11458

Product Information

Application	WB, IF, ICC, E
Primary Accession	P61236
Other Accession	NP_113665 , 117956405
Reactivity	Human, Mouse, Rat
Host	Rabbit
Clonality	Polyclonal
Isotype	IgG
Calculated MW	13608
Concentration (mg/ml)	1 mg/mL
Conjugate	Unconjugated
Application Notes	YPEL3 antibody can be used for detection of YPEL3 by Western blot at 1 μ g/mL. Antibody can also be used for immunocytochemistry starting at 2.5 μ g/mL. For immunofluorescence start at 2.5 μ g/mL.

Additional Information

Gene ID	83719
Other Names	Protein yippee-like 3, YPEL3
Target/Specificity	YPEL3;
Reconstitution & Storage	YPEL3 antibody can be stored at 4°C for three months and -20°C, stable for up to one year. As with all antibodies care should be taken to avoid repeated freeze thaw cycles. Antibodies should not be exposed to prolonged high temperatures.
Precautions	YPEL3 Antibody is for research use only and not for use in diagnostic or therapeutic procedures.

Protein Information

Name	YPEL3
Function	Involved in proliferation and apoptosis in myeloid precursor cells.
Cellular Location	Nucleus, nucleolus.
Tissue Location	Widely expressed..

Background

YPEL3 Antibody: YPEL3 (yippee-like 3) belongs to a family of five yippee-like proteins, all of which localize to the centrosome or mitotic spindle and are widely expressed in both adult and fetal tissue. This localization plus the fact that the family of human YPEL proteins share a high degree of sequence homology across species suggests that these proteins may have a conserved function involved in cell division. YPEL3 is a p53-regulated gene whose expression is induced by DNA damage and in turn induces cellular senescence. It appears to function as a tumor suppressor as it is downregulated in colon and breast tumors.

References

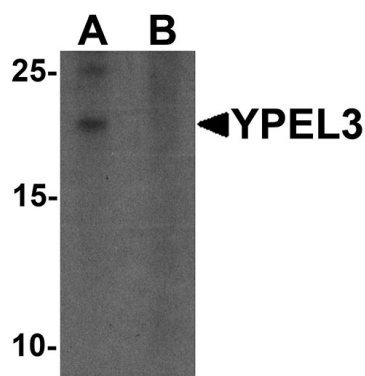
Hosono K, Sasaki T, Minoshima S, et al. Identification and characterization of a novel gene family YPEL in a wide spectrum of eukaryotic species. *Gene* 2004; 340: 31-43.

Kelley K, Miller KR, Todd A, et al. YPEL3, a p53-regulated gene that induces cellular senescence. *Cancer Res.* 2010; 70:3566-75.

Tuttle R, Simon R, Hitch DC, et al. Senescence-associated gene YPEL3 is downregulated in human tumors. *Ann. Surg. Oncol.* 2011; 18:1791-6.

Tuttle R, Miller KR, Maiorano JN, et al. Novel senescence associated gene, YPEL3, is repressed by estrogen in ER+ mammary tumor cells and required for tamoxifen-induced cellular senescence. *Int. J. Cancer* 2011; epub.

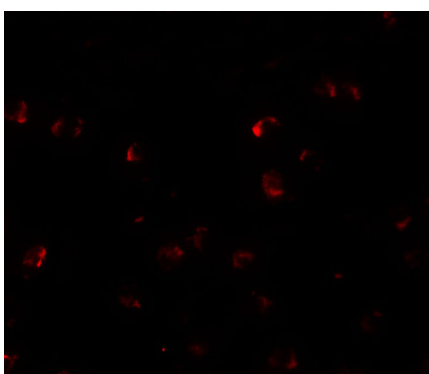
Images



Western blot analysis of YPEL3 in A-20 cell lysate with YPEL3 antibody at 1 $\mu\text{g/mL}$ in (A) the absence and (B) the presence of blocking peptide



Immunocytochemistry of YPEL3 in A20 cells with YPEL3 antibody at 2.5 $\mu\text{g/mL}$.



Immunofluorescence of YPEL3 in A20 cells with YPEL3 antibody at 5 $\mu\text{g/mL}$.

Please note: All products are 'FOR RESEARCH USE ONLY. NOT FOR USE IN DIAGNOSTIC OR THERAPEUTIC PROCEDURES'.