

SEPT1 Antibody

Catalog # ASC11497

Product Information

| | |
|------------------------------|--|
| Application | WB, IF, ICC, E |
| Primary Accession | Q8WYJ6 |
| Other Accession | NP_443070 , 431822382 |
| Reactivity | Human, Mouse, Rat |
| Host | Rabbit |
| Clonality | Polyclonal |
| Isotype | IgG |
| Calculated MW | 42386 |
| Concentration (mg/ml) | 1 mg/mL |
| Conjugate | Unconjugated |
| Application Notes | SEPT1 antibody can be used for detection of SEPT1 by Western blot at 1 μ g/mL. Antibody can also be used for immunocytochemistry starting at 5 μ g/mL. For immunofluorescence start at 5 μ g/mL. |

Additional Information

| | |
|-------------------------------------|---|
| Gene ID | 1731 |
| Other Names | Septin-1, LARP, Peanut-like protein 3, Serologically defined breast cancer antigen NY-BR-24, SEPT1, DIFF6, PNUTL3 |
| Target/Specificity | SEPT1; At least two isoforms of SEPT1 are known to exist. This antibody is predicted to not cross-react with other Septin protein family members. |
| Reconstitution & Storage | SEPT1 antibody can be stored at 4°C for three months and -20°C, stable for up to one year. As with all antibodies care should be taken to avoid repeated freeze thaw cycles. Antibodies should not be exposed to prolonged high temperatures. |
| Precautions | SEPT1 Antibody is for research use only and not for use in diagnostic or therapeutic procedures. |

Protein Information

| | |
|--------------------------|---|
| Name | SEPTIN1 (HGNC:2879) |
| Synonyms | DIFF6, PNUTL3, SEPT1 |
| Function | Filament-forming cytoskeletal GTPase (By similarity). May play a role in cytokinesis (Potential). |
| Cellular Location | Cytoplasm. Cytoplasm, cytoskeleton. Cytoplasm, cytoskeleton, microtubule organizing center, centrosome. Midbody. Note=Remains at the centrosomes and the nearby microtubules throughout mitosis. Localizes to the midbody |

during cytokinesis

Tissue Location

Expressed at high levels in lymphoid and hematopoietic tissues.

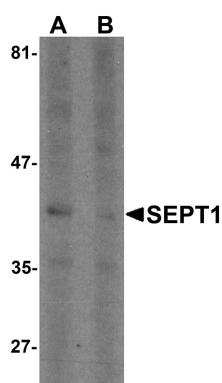
Background

SEPT1 Antibody: SEPT1 (also known as Septin 1), is a member of the septin family of GTPases. Members of this family are required for cytokinesis and the maintenance of cellular morphology. SEPT1 was initially identified through yeast two-hybrid screening as an interaction partner for the serine/threonine kinase Aurora-B. During mitosis, SEPT1 localizes to the spindle pole, suggesting that it may play a role in cytokinesis and chromosome congression.

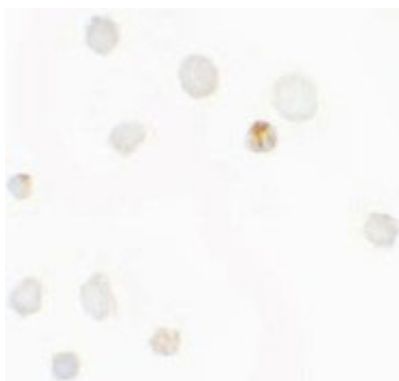
References

Qi M, Yu W, Liu S, et al. Septin1, a new interaction partner for human serine/threonine kinase aurora-B. *Biochem. Biophys. Res. Commun.* 2005; 336:994-1000.
Russell SE and Hall PA. Septin genomics: a road less travelled. *Biol. Chem.* 2011; 392:763-7.
Zhu J, Qi ST, Wang YP, et al. Septin1 is required for spindle assembly and chromosome congression in mouse oocytes. *Dev. Dyn.* 2011; 240:2281-9.

Images

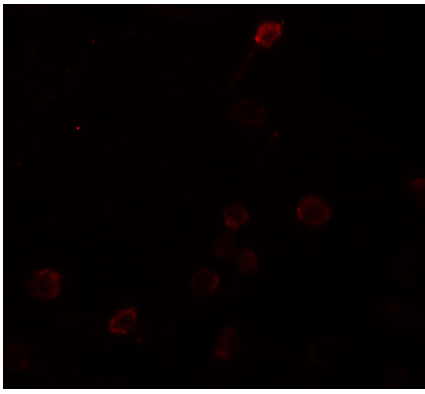


Western blot analysis of SEPT1 in Raji cell lysate with SEPT1 antibody at 1 $\mu\text{g/ml}$ in (A) the absence and (B) the presence of blocking peptide.



Immunocytochemistry of SEPT1 in Raji cells with SEPT1 antibody at 5 $\mu\text{g/mL}$.

Immunofluorescence of SEPT1 in Raji cells with SEPT1 antibody at 20 $\mu\text{g/mL}$.



Please note: All products are 'FOR RESEARCH USE ONLY. NOT FOR USE IN DIAGNOSTIC OR THERAPEUTIC PROCEDURES'.