

ATG14 Antibody

Catalog # ASC11551

Product Information

Application	WB, IF, E
Primary Accession	Q6ZNE5
Other Accession	NP_055739 , 50540545
Reactivity	Human, Mouse, Rat
Host	Rabbit
Clonality	Polyclonal
Isotype	IgG
Calculated MW	55309
Concentration (mg/ml)	1 mg/mL
Conjugate	Unconjugated
Application Notes	ATG14 antibody can be used for detection of ATG14 by Western blot at 1 - 2 μ g/mL. For immunofluorescence start at 20 μ g/mL.

Additional Information

Gene ID	22863
Other Names	Beclin 1-associated autophagy-related key regulator, Barkor, Autophagy-related protein 14-like protein, Atg14L, ATG14, KIAA0831
Target/Specificity	ATG14; At least three isoforms of ATG14 are known to exist; this antibody will detect all three isoforms
Reconstitution & Storage	ATG14 antibody can be stored at 4°C for three months and -20°C, stable for up to one year. As with all antibodies care should be taken to avoid repeated freeze thaw cycles. Antibodies should not be exposed to prolonged high temperatures.
Precautions	ATG14 Antibody is for research use only and not for use in diagnostic or therapeutic procedures.

Protein Information

Name	ATG14 {ECO:0000303 PubMed:18843052}
Function	Required for both basal and inducible autophagy. Determines the localization of the autophagy-specific PI3-kinase complex PI3KC3-C1 (PubMed: 18843052 , PubMed: 19050071). Plays a role in autophagosome formation and MAP1LC3/LC3 conjugation to phosphatidylethanolamine (PubMed: 19270696 , PubMed: 20713597). Promotes BECN1 translocation from the trans-Golgi network to autophagosomes (PubMed: 20713597). Enhances PIK3C3 activity in a BECN1-dependent manner. Essential for the autophagy-dependent phosphorylation of BECN1 (PubMed: 23878393). Stimulates the phosphorylation of BECN1, but suppresses the

phosphorylation PIK3C3 by AMPK (PubMed:[23878393](#)). Binds to STX17-SNAP29 binary t-SNARE complex on autophagosomes and primes it for VAMP8 interaction to promote autophagosome-endolysosome fusion (PubMed:[25686604](#), PubMed:[37632749](#)). Modulates the hepatic lipid metabolism (By similarity).

Cellular Location

Cytoplasm. Endoplasmic reticulum membrane; Peripheral membrane protein. Preautophagosomal structure membrane; Peripheral membrane protein. Cytoplasmic vesicle, autophagosome membrane; Peripheral membrane protein. Note=Cytosolic under nutrient-rich conditions (PubMed:19050071). Following autophagy stimuli, such as starvation or rapamycin induction, predominantly detected in cytoplasmic foci, identified as isolation membranes and autophagosomes (PubMed:19050071). Accumulates on highly curved PtdIns(3)P enriched autophagic membrane via its BATS domain to sense and maintain membrane curvature (By similarity). Also localizes to discrete punctae along the ciliary axoneme and to the base of the ciliary axoneme (By similarity). {ECO:0000250|UniProtKB:Q8CDJ3}

Background

ATG14 Antibody: Autophagy, the process of bulk degradation of cellular proteins through an autophagosomic-lysosomal pathway is important for normal growth control and may be defective in tumor cells. It is involved in the preservation of cellular nutrients under starvation conditions as well as the normal turnover of cytosolic components. This process is negatively regulated by TOR (Target of rapamycin) through phosphorylation of autophagy protein ATG1. ATG14 is a subunit of a class III phosphatidylinositol (PtdIns) 3-kinase complex that targets the complex to the endoplasmic reticulum, the site of autophagosome formation.

References

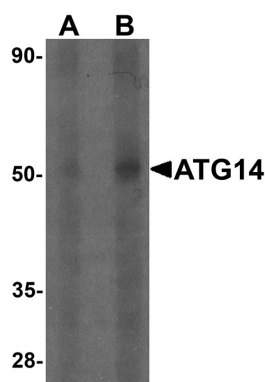
Gozuacik D and Kimchi A. Autophagy as a cell death and tumor suppressor mechanism. *Oncogene* 2004; 23:2891-906.

Kisen GO, Tessitore L, Costelli P, et al. Reduced autophagic activity in primary rat hepatocellular carcinoma and ascites hepatoma cells. *Carcinogenesis* 1993; 14:2501-5.

Kamada Y, Funakoshi T, Shintani T, et al. Tor-mediated induction of autophagy via Apg1 protein kinase complex. *J. Cell. Biol.* 2000; 150:1507-13.

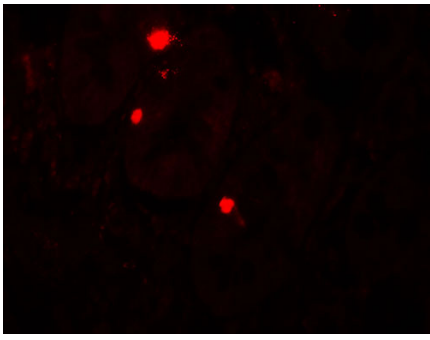
Itakura E, Kishi C, Inoue K, et al. Beclin 1 forms two distinct phosphatidylinositol 3-kinase complexes with mammalian Atg14 and UVRAG. *Mol. Biol. Cell* 2008; 19:5360-72.

Images



Western blot analysis of ATG14 in human small intestine tissue lysate with ATG14 antibody at (A) 1 and (B) 2 $\mu\text{g/mL}$.

Immunofluorescence of ATG14 in human small intestine tissue with ATG14 antibody at 20 $\mu\text{g/mL}$.



Please note: All products are 'FOR RESEARCH USE ONLY. NOT FOR USE IN DIAGNOSTIC OR THERAPEUTIC PROCEDURES'.