

CHCHD6 Antibody

Catalog # ASC11584

Product Information

Application	WB, E
Primary Accession	Q9BRQ6
Other Accession	NP_115719 , 14150134
Reactivity	Human
Host	Rabbit
Clonality	Polyclonal
Isotype	IgG
Calculated MW	26458
Concentration (mg/ml)	1 mg/mL
Conjugate	Unconjugated
Application Notes	CHCHD6 antibody can be used for detection of CHCHD6 by Western blot at 1 - 2 µg/mL.

Additional Information

Gene ID	84303
Other Names	MICOS complex subunit MIC25, Coiled-coil-helix cristae morphology protein 1, Coiled-coil-helix-coiled-coil-helix domain-containing protein 6, CHCHD6, CHCM1, MIC25
Target/Specificity	CHCHD6; CHCHD6 is predicted to not cross-react to other members of the CHCHD family.
Reconstitution & Storage	CHCHD6 antibody can be stored at 4°C for three months and -20°C, stable for up to one year.
Precautions	CHCHD6 Antibody is for research use only and not for use in diagnostic or therapeutic procedures.

Protein Information

Name	CHCHD6
Synonyms	CHCM1, MIC25
Function	Component of the MICOS complex, a large protein complex of the mitochondrial inner membrane that plays crucial roles in the maintenance of crista junctions, inner membrane architecture, and formation of contact sites to the outer membrane.
Cellular Location	Mitochondrion inner membrane; Lipid-anchor. Mitochondrion

Background

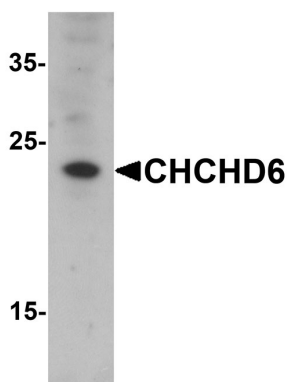
CHCHD6 Antibody: CHCHD6 is a member of a family of proteins containing a conserved (coiled coil 1)-(helix 1)-(coiled coil 2)-(helix 2) domain and has been observed in a complex with the mitochondrial proteins mitofilin, SAM50, metaxins 1 and 2, and CHCHD3. CHCHD6 knockdown causes severe defects in mitochondrial cristae morphology as well as reductions in cell growth, ATP production and oxygen consumption. This decrease of CHCHD6 also led to a reduction in mitofilin protein levels, while a knockdown of mitofilin resulted in a reduced level of CHCHD6, suggesting coordinate regulation between these two proteins. CHCHD6 knockdown in human cancer cells enhances their sensitivity to genotoxic anticancer drugs, suggesting that CHCHD6 may be a potential therapeutic anti-tumor target.

References

Xie J, Marusich MF, Souda P, et al. The mitochondrial inner membrane protein Mitofilin exists as a complex with SAM50, metaxins 1 and 2, coiled-coil-helix coiled-coil-helix domain-containing protein 3 and 6 and DnaJC11. *FEBS Lett.* 2007; 581:3545-9.

An J, Shi J, He Q, et al. CHCM1/CHCHD6, novel mitochondrial protein linked to regulation of mitofilin and mitochondrial cristae morphology. *J. Biol. Chem.* 2012; 287:7411-26.

Images



Western blot analysis of CHCHD6 in SK-N-SH cell lysate with CHCHD6 antibody at 1 μ g/mL.

Please note: All products are 'FOR RESEARCH USE ONLY. NOT FOR USE IN DIAGNOSTIC OR THERAPEUTIC PROCEDURES'.