

BCL3 Antibody

Catalog # ASC11599

Product Information

Application	WB, E
Primary Accession	P20749
Other Accession	NP_005169 , 164664508
Reactivity	Human
Host	Rabbit
Clonality	Polyclonal
Isotype	IgG
Calculated MW	47584
Concentration (mg/ml)	1 mg/mL
Conjugate	Unconjugated
Application Notes	BCL3 antibody can be used for detection of BCL3 by Western blot at 1 - 2 μ g/mL.

Additional Information

Gene ID	602
Other Names	B-cell lymphoma 3 protein, BCL-3, Proto-oncogene BCL3, BCL3, BCL4, D19S37
Target/Specificity	BCL3;
Reconstitution & Storage	BCL3 antibody can be stored at 4°C for three months and -20°C, stable for up to one year.
Precautions	BCL3 Antibody is for research use only and not for use in diagnostic or therapeutic procedures.

Protein Information

Name	BCL3
Synonyms	BCL4, D19S37
Function	Contributes to the regulation of transcriptional activation of NF-kappa-B target genes. In the cytoplasm, inhibits the nuclear translocation of the NF-kappa-B p50 subunit. In the nucleus, acts as transcriptional activator that promotes transcription of NF-kappa-B target genes. Contributes to the regulation of cell proliferation (By similarity).
Cellular Location	Nucleus. Cytoplasm. Cytoplasm, perinuclear region. Note=Ubiquitination via 'Lys-63'- linked ubiquitin chains is required for nuclear accumulation

Background

BCL3 Antibody: The proto-oncogene Bcl-3, believed to be involved in certain human B cell leukemias, encodes a protein that contributes to the regulation of transcriptional activation of NF- κ -B target genes. BCL3 contains seven ankyrin repeats, which are most closely related to those found in I- κ -B proteins. The expression of this gene can be induced by NF- κ -B, which forms a part of the autoregulatory loop that controls the nuclear residence of p50 NF- κ -B. It contributes to the regulation of cell proliferation. A chromosomal aberration involving BCL3 may be a cause of B-cell chronic lymphocytic leukemia.

References

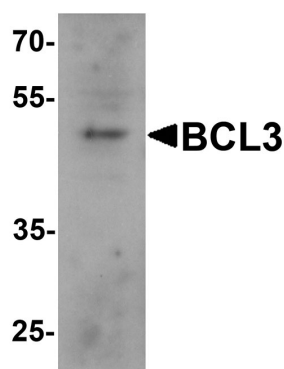
Ohno H, Takimoto G, and McKeithan TW. The candidate proto-oncogene bcl-3 is related to genes implicated in cell lineage determination and cell cycle control. *Cell* 1990; 60:991-7.

Wulczyn FG, Naumann M, and Scheidereit C. Candidate proto-oncogene bcl-3 encodes a subunit-specific inhibitor of transcription factor NF-kappa B. *Nature* 1992; 358:597-9.

Ibrahim HA, Amen F, Reid AG, et al. BCL3 rearrangement, amplification and expression in diffuse large B-cell lymphoma. *Eur. J. Haematol.* 2011; 87:480-5.

Ge B, Li O, Wilder P, et al. NF-kappa B regulates BCL3 transcription in T lymphocytes through an intronic enhancer. *J. Immunol.* 2003; 171:4210-8.

Images



Western blot analysis of BCL3 in 293 cell lysate with BCL3 antibody at 1 µg/mL.

Please note: All products are 'FOR RESEARCH USE ONLY. NOT FOR USE IN DIAGNOSTIC OR THERAPEUTIC PROCEDURES'.