

CCL4 Antibody

Catalog # ASC11613

Product Information

Application	WB, IF, E, IHC-P
Primary Accession	P13236
Other Accession	NP_002975 , 4506845
Reactivity	Human, Mouse, Rat
Host	Rabbit
Clonality	Polyclonal
Isotype	IgG
Calculated MW	10212
Concentration (mg/ml)	1 mg/mL
Conjugate	Unconjugated
Application Notes	CCL4 antibody can be used for detection of CCL4 by Western blot at 1 - 2 μ g/mL.

Additional Information

Gene ID	388372;6351
Other Names	C-C motif chemokine 4, G-26 T-lymphocyte-secreted protein, HC21, Lymphocyte activation gene 1 protein, LAG-1, MIP-1-beta(1-69), Macrophage inflammatory protein 1-beta, MIP-1-beta, PAT 744, Protein H400, SIS-gamma, Small-inducible cytokine A4, T-cell activation protein 2, ACT-2, MIP-1-beta(3-69), CCL4, LAG1, MIP1B, SCYA4
Target/Specificity	CCL4;
Reconstitution & Storage	CCL4 antibody can be stored at 4°C for three months and -20°C, stable for up to one year.
Precautions	CCL4 Antibody is for research use only and not for use in diagnostic or therapeutic procedures.

Protein Information

Name	CCL4
Synonyms	LAG1, MIP1B, SCYA4
Function	Monokine with inflammatory and chemokinetic properties. Binds to CCR5. One of the major HIV-suppressive factors produced by CD8+ T- cells. Recombinant MIP-1-beta induces a dose-dependent inhibition of different strains of HIV-1, HIV-2, and simian immunodeficiency virus (SIV). The processed form MIP-1-beta(3-69) retains the abilities to induce down-modulation of surface expression of the chemokine receptor CCR5 and to inhibit the CCR5-mediated entry of HIV-1 in T-cells. MIP-1- beta(3-69) is also

a ligand for CCR1 and CCR2 isoform B.

Cellular Location

Secreted.

Background

CCL4 Antibody: CCL4, also known as macrophage inflammatory protein 1-beta (MIP1B), belongs to the intercrine beta (chemokine CC) family. Both CCL4 and the related protein CCL3 participate in the host response to invading bacterial, viral, parasite and fungal pathogens by regulating the trafficking and activation state of selected subgroups of inflammatory cells. While both CCL4 and CCL3 exert similar effects on monocytes, their effect on lymphocytes differ; with CCL4 selectively attracting CD4⁺ lymphocytes and CCL3 selectively attracting CD8⁺ lymphocytes. Additionally, both have been shown to be potent chemoattractants for B cells, eosinophils and dendritic cells. The processed form of CCL4 can induce down-modulation of surface expression of the chemokine receptor CCR5, thus inhibiting the CCR5-mediated entry of HIV-1 in T cells.

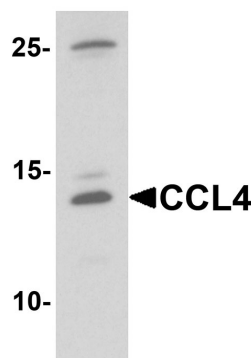
References

Baixeras E, Roman-Roman S, Jitsukawa S, et al. Cloning and expression of a lymphocyte activation gene (LAG-1). *Mol. Immunol.* 1990; 27:1091-102.

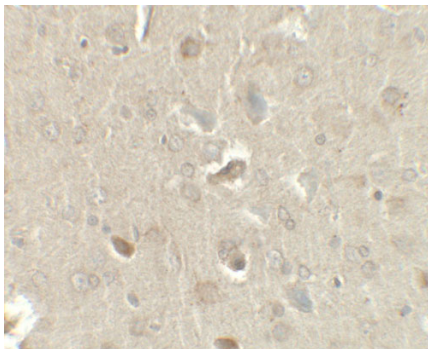
Maurer M and von Stebut E. Macrophage inflammatory protein-1. *Int. J. Biochem. Cell Biol.* 2004; 36:1882-6.

Margolis LB, Glushakova S, Grivel JC, et al. Blockade of CC chemokine receptor 5 (CCR5)-tropic human immunodeficiency virus-1 replication in human lymphoid tissue by CC chemokines. *J. Clin. Invest.* 1998; 101:1876-80.

Images

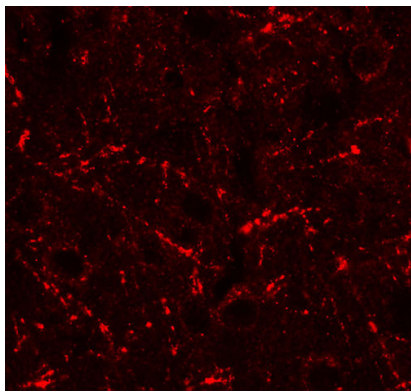


Western blot analysis of CCL4 in rat brain tissue lysate with CCL4 antibody at 1 µg/mL.



Immunohistochemistry of CCL4 in rat brain tissue with CCL4 antibody at 2.5 µg/ml.

Immunofluorescence of CCL4 in rat brain tissue with CCL4 antibody at 20 µg/ml.



Please note: All products are 'FOR RESEARCH USE ONLY. NOT FOR USE IN DIAGNOSTIC OR THERAPEUTIC PROCEDURES'.