

# PIBF1 Antibody

Catalog # ASC11618

## Product Information

---

<b>Application</b>	WB, IF, E, IHC-P
<b>Primary Accession</b>	<a href="#">Q8WXW3</a>
<b>Other Accession</b>	<a href="#">NP_006337</a> , <a href="#">5576958</a>
<b>Reactivity</b>	Human, Mouse, Rat
<b>Host</b>	Rabbit
<b>Clonality</b>	Polyclonal
<b>Isotype</b>	IgG
<b>Calculated MW</b>	89805
<b>Concentration (mg/ml)</b>	1 mg/mL
<b>Conjugate</b>	Unconjugated
<b>Application Notes</b>	PIBF1 antibody can be used for detection of PIBF1 by Western blot at 1 - 2 $\mu$ g/mL.

## Additional Information

---

<b>Gene ID</b>	10464
<b>Other Names</b>	Progesterone-induced-blocking factor 1, PIBF1, C13orf24, PIBF
<b>Target/Specificity</b>	PIBF1; Multiple isoforms of PIBF1 exists as a result of alternative splicing event.
<b>Reconstitution &amp; Storage</b>	PIBF1 antibody can be stored at 4°C for three months and -20°C, stable for up to one year.
<b>Precautions</b>	PIBF1 Antibody is for research use only and not for use in diagnostic or therapeutic procedures.

## Protein Information

---

<b>Name</b>	PIBF1
<b>Synonyms</b>	C13orf24, PIBF
<b>Function</b>	Plays a role in ciliogenesis.
<b>Cellular Location</b>	Cytoplasm, cytoskeleton, microtubule organizing center, centrosome. Cytoplasm. Secreted Note=In progesterone-treated astrocytoma cells a 57 kDa protein and isoform 1 (90 kDa) have been described, both being located in the intracellular medium and secreted. Respective predominant forms are isoform 1 in the intracellular and the 57 kDa protein in the extracellular medium (PubMed:25218441). [Isoform 4]: Secreted Note=Secreted by progesterone-treated lymphocytes (PubMed:14634107)

## Tissue Location

Expressed at highest levels in testis. Moderate expression is detected in spleen, thymus, prostate, ovary, small intestine, and colon (PubMed:11935316). Expressed in the first trimester pregnancy decidua (PubMed:12516630). Localized to extravillous cytotrophoblast (at protein level). Also found in syncytiotrophoblast and part of the villous cytotrophoblast. Isoform 1 is expressed in first trimester and term villous trophoblast; trophoblast cells can additionally express other isoforms (PubMed:18817979). Overexpressed in solid tumors from stomach and uterus and in cells from ovary, cervical, breast, lymphoma and leukemia cancer (PubMed:25218441).

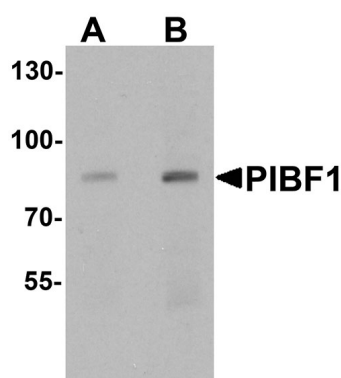
## Background

**PIBF1 Antibody:** PIBF1 is synthesized during pregnancy in response to progesterone by T lymphocytes. PIBF1 inhibits arachidonic acid release, controls NK activity, and modifies the cytokine balance exerting an anti-abortion effect. It contains a leucine zipper motif, a basic zipper sequence, a PEST sequence, a nuclear localization signal, an ER membrane retention signal and N-glycosylation and phosphorylation sites. PIBF1 is significantly higher in healthy pregnant women than in women at risk for premature pregnancy termination. Full-length PIBF1 is associated with the nucleus and functions as a transcription factor, whereas secretion of shorter forms which may act as cytokines is induced by activation of the cell.

## References

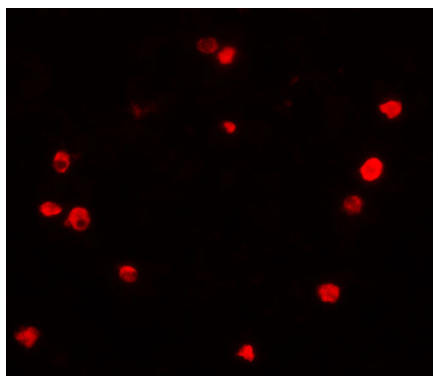
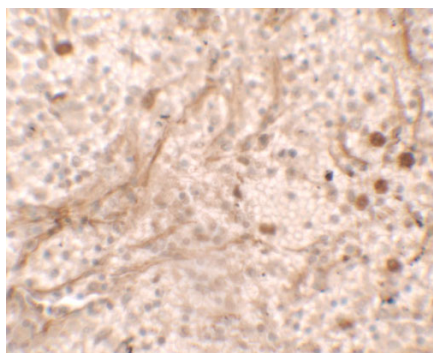
Laskarin G, Tokmadzic VS, Strbo N, et al. Progesterone induced blocking factor (PIBF) mediates progesterone induced suppression of decidual lymphocyte cytotoxicity. *Am. J. Reprod. Immunol.* 2002; 48:201-9.  
Lachmann M, Gelbmann D, Kalman E, et al. PIBF (progesterone induced blocking factor) is overexpressed in highly proliferating cells and associated with the centrosome. *Int. J. Cancer.* 2004; 112:51-60  
Polgar B, Kispal G, Lachmann M, et al. Molecular cloning and immunologic characterization of a novel cDNA coding for progesterone-induced blocking factor. *J. Immunol.* 2003; 171:5956-63.  
Raghupathy R, Al-Mutawa E, Al-Azemi M, et al. Progesterone-induced blocking factor (PIBF) modulates cytokine production by lymphocytes from women with recurrent miscarriage or preterm delivery. *J. Reprod. Immunol.* 2009; 80:91-9.

## Images



Western blot analysis of PIBF1 in human placenta tissue lysate with PIBF1 antibody at (A) 1 and (B) 2 µg/mL

Immunohistochemistry of PBIF in spleen tissue with PBIF antibody at 5 µg/ml.



Immunofluorescence of PBIF in human spleen tissue with PBIF antibody at 20  $\mu$ g/ml.

Please note: All products are 'FOR RESEARCH USE ONLY. NOT FOR USE IN DIAGNOSTIC OR THERAPEUTIC PROCEDURES'.