

# GOLGA5 Antibody

Catalog # ASC11668

## Product Information

---

<b>Application</b>	WB, IF, E, IHC-P
<b>Primary Accession</b>	<a href="#">Q8TBA6</a>
<b>Other Accession</b>	<a href="#">NP_005104</a> , <a href="#">30260188</a>
<b>Reactivity</b>	Human, Mouse, Rat
<b>Host</b>	Rabbit
<b>Clonality</b>	Polyclonal
<b>Isotype</b>	IgG
<b>Calculated MW</b>	83024
<b>Concentration (mg/ml)</b>	1 mg/mL
<b>Conjugate</b>	Unconjugated
<b>Application Notes</b>	GOLGA5 antibody can be used for detection of GOLGA5 by Western blot at 1 - 2 µg/mL. Antibody can also be used for Immunohistochemistry starting at 5 µg/mL. For immunofluorescence start at 20 µg/mL.

## Additional Information

---

<b>Gene ID</b>	9950
<b>Other Names</b>	Golgin subfamily A member 5, Cell proliferation-inducing gene 31 protein, Golgin-84, Protein Ret-II, RET-fused gene 5 protein, GOLGA5, RETII, RFG5
<b>Target/Specificity</b>	GOLGA5; GOLGA5 antibody is human, mouse and rat reactive. Two isoforms of GOLGA5 exist due to alternative splicing events.
<b>Reconstitution &amp; Storage</b>	GOLGA5 antibody can be stored at 4°C for three months and -20°C, stable for up to one year.
<b>Precautions</b>	GOLGA5 Antibody is for research use only and not for use in diagnostic or therapeutic procedures.

## Protein Information

---

<b>Name</b>	GOLGA5
<b>Synonyms</b>	RETII, RFG5
<b>Function</b>	Involved in maintaining Golgi structure. Stimulates the formation of Golgi stacks and ribbons. Involved in intra-Golgi retrograde transport.
<b>Cellular Location</b>	Golgi apparatus membrane; Single-pass type IV membrane protein. Note=Found throughout the Golgi, both on cisternae and, at higher abundance, on the tubulo-vesicular structures of the cis-Golgi network
<b>Tissue Location</b>	Ubiquitous. Highly expressed in seminiferous tubules and Leydig cells in

testis, and detected at much lower levels in the other tissues tested.  
Expression is very low or not detectable in spermatozoa.

## Background

---

**GOLGA5 Antibody:** GOLGA5 (Golgi autoantigen, subfamily A, member 5), also known as GOLGA84, RFG5 (RET-fused gene 5 protein) or GOLIM5, is a ubiquitously expressed single-pass type II coiled-coil membrane protein that is involved in maintaining Golgi structure (1). It is localized to the Golgi apparatus and predominantly found on membranes at the cis side of the Golgi stack (1,2). As a mitotic phosphoprotein, GOLGA5 binds to active Rab 1 and associates with CASP (an isoform of CDP) in a golgin-tethering complex that is believed to play a role in intra-Golgi retrograde transport (3,4). Defects in GOLGA5 are a cause of thyroid papillary carcinoma (TPC) (5).

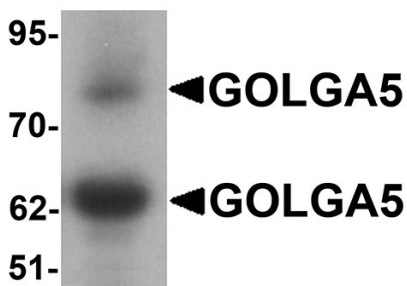
## References

---

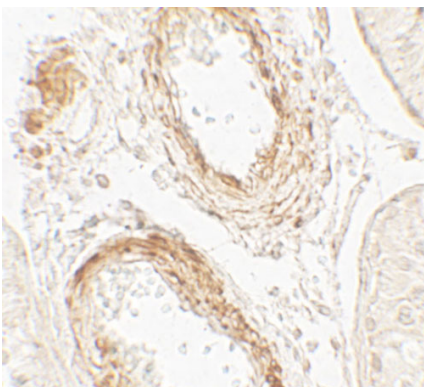
Bascom RA, Srinivasan S, Nussbaum RL. Identification and characterization of golgin 84, a novel Golgi integral membrane protein with a cytoplasmic coiled-coil domain. *J. Biol. Chem.* 1999; 274:2953-62.  
Diao A, Rahman D, Pappin DJ, et al. 2003. The coiled-coil membrane protein golgin 84 is a novel Rab effector required for Golgi ribbon formation. *J. Cell Biol.* 2003; 160:201-12.  
Malsam J, Satoh A, Pelletier L, et al. Golgin tethers define subpopulations of COPI vesicles. *Science* 2005; 307:1095-8.  
Sohda M, Misumi Y, Yamamoto A, et al. Interaction of Golgin-84 with the COG complex mediates the intra-Golgi retrograde transport. *Traffic* 2010;11:1552-66.

## Images

---

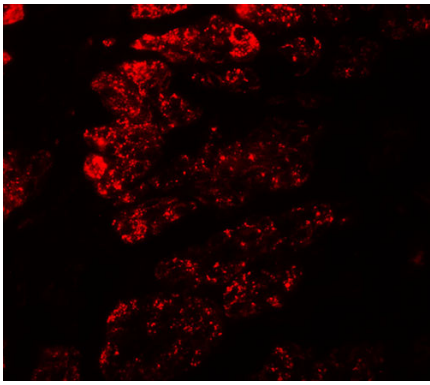


Western blot analysis of GOLGA5 in human testis tissue lysate with GOLGA5 antibody at 1 µg/mL.



Immunohistochemistry of GOLGA5 in human testis tissue with GOLGA5 antibody at 5 µg/mL.

Immunofluorescence of GOLGA5 in human testis tissue with GOLGA5 antibody at 20 µg/mL.



Please note: All products are 'FOR RESEARCH USE ONLY. NOT FOR USE IN DIAGNOSTIC OR THERAPEUTIC PROCEDURES'.