

SNRPN Antibody

Catalog # ASC11916

Product Information

Application	WB, IF, E, IHC-P
Primary Accession	P63164
Other Accession	NP_003088 , 4507135
Reactivity	Human, Mouse, Rat
Host	Rabbit
Clonality	Polyclonal
Isotype	IgG
Calculated MW	24614
Concentration (mg/ml)	1 mg/mL
Conjugate	Unconjugated
Application Notes	SNRPN antibody can be used for detection of SNRPN by Western blot at 0.5 - 1 μ g/mL. Antibody can also be used for immunohistochemistry starting at 5 μ g/mL. For immunofluorescence start at 20 μ g/mL.

Additional Information

Gene ID	81781
Other Names	Small nuclear ribonucleoprotein-associated protein N, snRNP-N, Sm protein D, Sm-D, Sm protein N, Sm-N, SmN, Snrpn, Smn
Target/Specificity	SNRPN; SNRPN antibody is human, mouse and rat reactive.
Reconstitution & Storage	SNRPN antibody can be stored at 4°C for three months and -20°C, stable for up to one year.
Precautions	SNRPN Antibody is for research use only and not for use in diagnostic or therapeutic procedures.

Protein Information

Name	Snrpn
Synonyms	Smn
Function	May be involved in tissue-specific alternative RNA processing events.
Cellular Location	Nucleus.
Tissue Location	Brain specific.

Background

The small nuclear riboprotein-associated protein N (SNRPN) is one polypeptide of a small nuclear ribonucleoprotein complex and belongs to the snRNP SMB/SMN family. SNRPN plays a role in pre-mRNA processing and alternative splicing (1). SNRPN arises from a bicistronic transcript that also encodes a protein identified as the SNRPN upstream reading frame (SNURF) (2). Mutations or deletions in the SNRPN gene may be linked to responsible for Angelman syndrome or Prader-Willi syndrome (3).

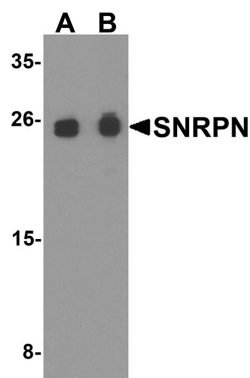
References

Ozcelik T, Leff S, Robinson W, et al. Small nuclear ribonucleoprotein polypeptide N (SNRPN), an expressed gene in the Prader-Willi syndrome critical region. *Nat. Genet.* 1992; 2:265-9.

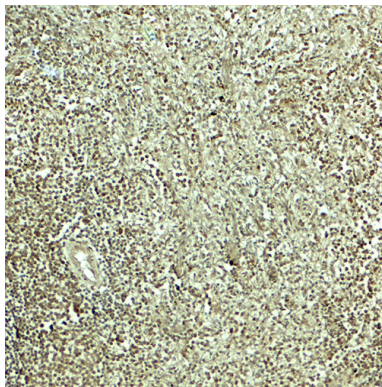
Gray TA, Saitoh S, and Nicholls RD. An imprinted, mammalian bicistronic transcript encodes two independent proteins. *Proc. Natl. Acad. Sci. USA* 1999; 96:5616-21.

Chen Y, Liu YJ, Pei YF, et al. Copy number variations at the Prader-Willi syndrome region on chromosome 15 and associations with obesity in whites. *Obesity* 2011; 19:1229-34.

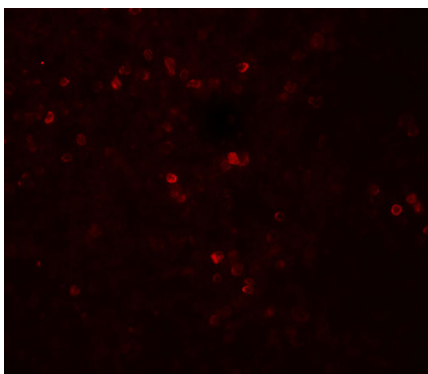
Images



Western blot analysis of SNRPN in THP-1 cell lysate with SNRPN antibody at (A) 0.5 and (B) 1 μ g/ml.



Immunohistochemistry of SNRPN in human spleen tissue with SNRPN antibody at 5 μ g/mL.



Immunofluorescence of SNRPN in human spleen tissue with SNRPN antibody at 20 μ g/mL.

Please note: All products are 'FOR RESEARCH USE ONLY. NOT FOR USE IN DIAGNOSTIC OR THERAPEUTIC PROCEDURES'.