

LANCL2 Antibody

Catalog # ASC11958

Product Information

Application	WB, IHC, E
Primary Accession	Q9NS86
Other Accession	NP_061167 , 8923911
Reactivity	Human, Mouse, Rat
Host	Rabbit
Clonality	Polyclonal
Isotype	IgG
Calculated MW	50854
Concentration (mg/ml)	1 mg/mL
Conjugate	Unconjugated
Application Notes	LANCL2 antibody can be used for the detection of LANCL2 by Western blot at 1 - 2 μ g/mL. Antibody can also be used for immunohistochemistry starting at 5 μ g/mL.

Additional Information

Gene ID	55915
Other Names	LanC-like protein 2, Testis-specific adriamycin sensitivity protein, LANCL2, GPR69B, TASP
Target/Specificity	LANCL2; LANCL2 antibody is human, mouse and rat reactive.
Reconstitution & Storage	LANCL2 antibody can be stored at 4°C for three months and -20°C, stable for up to one year.
Precautions	LANCL2 Antibody is for research use only and not for use in diagnostic or therapeutic procedures.

Protein Information

Name	LANCL2
Synonyms	GPR69B, TASP
Function	Necessary for abscisic acid (ABA) binding on the cell membrane and activation of the ABA signaling pathway in granulocytes.
Cellular Location	Nucleus. Cytoplasm. Cell membrane Note=Localizes to the juxta-nuclear vesicles (PubMed:16979580) Associates with the cortical actin cytoskeleton (PubMed:16979580) Cholesterol depletion by methyl-beta-cyclodextrin causes partial dissociation from the cell membrane in vitro and an enhanced cell detachment from the matrix in vivo (PubMed:16979580). Membrane-association is important for the increased cellular sensitivity to an anticancer

Tissue Location

Expressed in brain and testis.

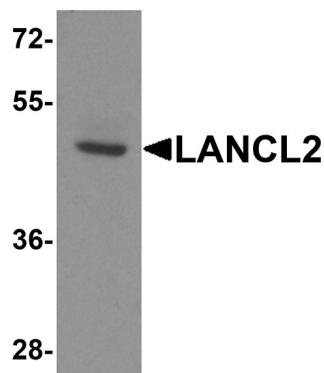
Background

LANCL2 (LanC-like protein 2), also known as TASP (testis-specific adriamycin sensitivity protein) or GPR69B, is a 450 amino acid member of the LanC-like protein family (1). It is expressed highly in brain and testis and localized to the nucleus, cytoplasm and cell membrane (2,3). LANCL2 is necessary for abscisic acid (ABA) binding on the cell membrane and activation of the ABA signaling pathway in granulocytes (3,4).

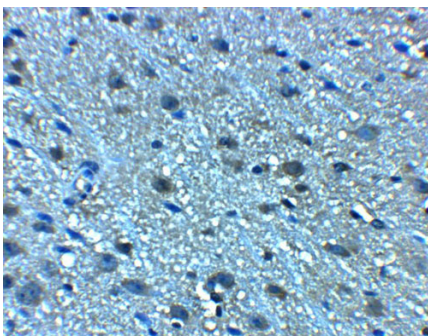
References

- Mayer H, Pongratz M, and Prohaska R. Molecular cloning, characterization, and tissue-specific expression of human LANCL2, a novel member of the LanC-like protein family. *DNA Seq.* 2001; 12:161-6.
- Sturla L, Fresia C, Guida L, et al. Binding of abscisic acid to human LANCL2. *Biochem. Biophys. Res. Commun.* 2011; 415:390-5.
- Landlinger C, Salzer U, and Prohaska R. Myristoylation of human LanC-like protein 2 (LANCL2) is essential for the interaction with the plasma membrane and the increase in cellular sensitivity to adriamycin. *Biochim. Biophys. Acta.* 2006; 1758:1759-67.
- Zeng M, van der Donk WA, Chen J. Lanthionine synthetase C-like protein 2 (LanCL2) is a novel regulator of Akt. *Mol. Biol. Cell* 2014; 25:3954-61.

Images



Western blot analysis of LANCL2 in human brain tissue lysate with LANCL2 antibody at 1 µg/ml.



Immunohistochemistry of LANCL2 in mouse brain tissue with LANCL2 antibody at 5 µg/mL.