

Goat Anti-Rabbit IgG (H&L) HRP

Catalog # ASP1615

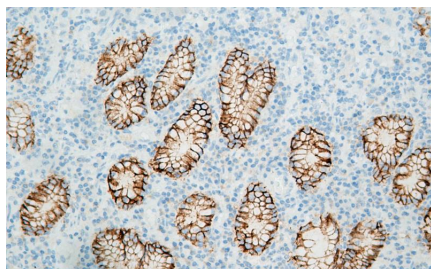
Product Information

| | |
|--------------------|------------------|
| Application | WB, IHC-P, IC, E |
| Reactivity | Rabbit |

Additional Information

| | |
|---------------------------|---|
| Source | Goat |
| Immunogen | Rabbit IgG |
| Purification | The antibody was isolated from ascitic by immunoaffinity chromatography using antigens coupled to agarose beads. |
| Target/Specificity | By immunoelectrophoresis and ELISA this antibody reacts specifically with Rabbit IgG. No antibody was detected against non immunoglobulin serum proteins. |
| Clonality | Polyclonal |
| Conjugate | HRP |
| Format | Liquid in 0.01M Phosphate Buffered Saline, pH 7.2, containing 1% BSA, 50% glycerol, 0.05% Sodium Azide |
| Dilution | E (1/5000 - 1/20000), WB (1/5000 - 1/20000), IHC-P (1/100 - 1/500), IC (1/100 - 1/500) |
| Storage | Shipped at 4°C. Upon delivery aliquot and store at -20°C for one year. Avoid freeze/thaw cycles. |

Images



Immunohistochemical analysis of paraffin-embedded Human stomach cancer section using claudin18.2 antibody. ASP1615 was used as the secondary at dilution 1:250, followed by DAB staining.

Citations

- [Targeted EpCAM-binding for the development of potent and effective anticancer proteins](#)
- [Preparative isolation of maltol glycoside from](#)
- [Cyclophilin A Inhibits Human Respiratory Syncytial Virus \(RSV\) Replication by Binding to RSV-N through Its PPIase Activity](#)

- [Functional characterization of an unobtrusive protein, CkMT4, in re-establishing desiccation tolerance in germinating seeds](#)

Please note: All products are 'FOR RESEARCH USE ONLY. NOT FOR USE IN DIAGNOSTIC OR THERAPEUTIC PROCEDURES'.