

Anti-Rabbit IgG (H&L) Secondary Antibody

Sheep Polyclonal, Unconjugated

Catalog # ASR1121

Product Information

Description	Anti-RABBIT IgG (H&L) (SHEEP) Antibody
Host	Sheep
Conjugate	Unconjugated
Target Species	Rabbit
Reactivity	Rabbit
Clonality	Polyclonal
Application	WB
Physical State	Liquid (sterile filtered)
Host Isotype	IgG
Target Isotype	IgG (H&L)
Buffer	0.02 M Potassium Phosphate, 0.15 M Sodium Chloride, pH 7.2
Immunogen	Rabbit IgG whole molecule
Species of Origin	Rabbit
Stabilizer	None
Preservative	0.01% (w/v) Sodium Azide

Additional Information

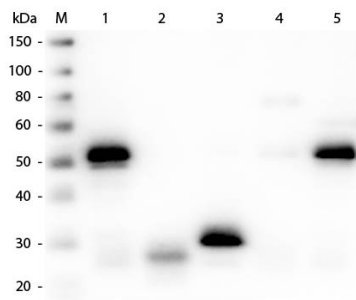
Shipping Condition	Wet Ice
Application Note	Anti-RABBIT IgG (H&L) (SHEEP) Antibody is suitable for immunoblotting (western or dot blot), ELISA, immunoperoxidase electron microscopy and immunohistochemistry as well as other peroxidase-antibody based enzymatic assays requiring lot-to-lot consistency.
Purity	Anti-RABBIT IgG (H&L) (SHEEP) Antibody was prepared from monospecific antiserum by immunoaffinity chromatography using Rabbit IgG coupled to agarose beads followed by solid phase adsorption(s) to remove any unwanted reactivities. Assay by immunoelectrophoresis resulted in a single precipitin arc against anti-Sheep Serum, Rabbit IgG and Rabbit Serum.
Storage Condition	Store vial at 4° C prior to opening. This product is stable for several weeks at 4° C as an undiluted liquid. Dilute only prior to immediate use. For extended storage aliquot contents and freeze at -20° C or below. Avoid cycles of freezing and thawing.
Precautions Note	This product is for research use only and is not intended for therapeutic or diagnostic applications.

Background

RABBIT IgG (H&L) (SHEEP) Antibody generated in sheep detects specifically rabbit IgG whole molecule.

Anti-rabbit IgG antibody is ideal for investigators involved in serum protein component research.

Images



Western Blot of Anti-Rabbit IgG (H&L) (SHEEP) Antibody (Min X Hu, Gt, Ms Serum Proteins) (p/n ASR1121). Lane M: 3 μ l Molecular Ladder. Lane 1: Rabbit IgG whole molecule (p/n 011-0102). Lane 2: Rabbit IgG F(ab) Fragment (p/n 011-0105). Lane 3: Rabbit IgG F(c) Fragment (p/n 010-0103). Lane 4: Rabbit IgM Whole Molecule (p/n 011-0107). Lane 5: Normal Rabbit Serum (p/n B309). All samples were reduced. Load: 50 ng per lane. Block: MB-070 for 30 min at RT. Primary Antibody: Anti-Rabbit IgG (H&L) (SHEEP) Antibody (Min X Hu, Gt, Ms Serum Proteins) (p/n ASR1121) 1:3,000 for 60 min at RT. Secondary antibody: Anti-Sheep IgG (DONKEY) Peroxidase Conjugated Antibody (p/n 613-703-168) 1:40,000 in MB-070 for 30 min at RT. Predicted/Observed Size: 25 and 50 kDa for Rabbit IgG and Serum, 25 kDa for F(c) and F(ab), 70 and 23 kDa for IgM. Rabbit F(c) migrates slightly higher.

Please note: All products are 'FOR RESEARCH USE ONLY. NOT FOR USE IN DIAGNOSTIC OR THERAPEUTIC PROCEDURES'.