

Anti-Swine IgG (H&L) Secondary Antibody

Goat Polyclonal, Unconjugated

Catalog # ASR1126

Product Information

Description	Anti-SWINE IgG (H&L) (GOAT) Antibody
Host	Goat
Conjugate	Unconjugated
Target Species	Swine
Clonality	Polyclonal
Application	WB
Physical State	Liquid (sterile filtered)
Host Isotype	IgG
Target Isotype	IgG (H&L)
Buffer	0.02 M Potassium Phosphate, 0.15 M Sodium Chloride, pH 7.2
Immunogen	Anti-Swine IgG (H&L) was produced by repeated immunization with swine whole IgG molecule in goat.
Preservative	0.01% (w/v) Sodium Azide

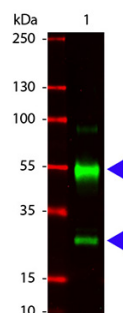
Additional Information

Shipping Condition	Wet Ice
Application Note	Anti-Swine IgG (H&L) is suitable for use in immunoelectrophoresis, western-blot, competitive western-blot, ELISA and competitive ELISA assays. Specific conditions for reactivity and signal detection should be optimized by the end user.
Purity	This product was prepared from monospecific antiserum by immunoaffinity chromatography using Swine IgG coupled to agarose beads. Assay by immunoelectrophoresis resulted in a single precipitin arc against anti-Goat Serum, Swine IgG and Swine Serum.
Storage Condition	Store vial at 4° C prior to opening. This product is stable for several weeks at 4° C as an undiluted liquid. Dilute only prior to immediate use. For extended storage aliquot contents and freeze at -20° C or below. Avoid cycles of freezing and thawing.
Precautions Note	This product is for research use only and is not intended for therapeutic or diagnostic applications.

Background

Anti-Swine IgG secondary antibody generated in goat detects specifically swine IgG. This secondary antibody anti-Swine is ideal for investigators who routinely perform titration assays, western-blot, immunoprecipitation and more generally immunoassays.

Images



Western Blot of Goat anti-Swine IgG antibody. Lane 1: Swine IgG. Lane 2: none. Load: 100 ng per lane. Primary antibody: Swine Antibody at 1:1,000 o/n at 4°C . Secondary antibody: DyLight™ 649 goat secondary antibody at 1:20,000 for 30 min at RT. Block: MB-070 for 30 min at RT. Predicted/Observed size: 55 kDa, 28 kDa for Swine IgG. Other band(s): none.

Please note: All products are 'FOR RESEARCH USE ONLY. NOT FOR USE IN DIAGNOSTIC OR THERAPEUTIC PROCEDURES'.