

Anti-NEDD1 Secondary Antibody

Rabbit Polyclonal, Unconjugated

Catalog # ASR1137

Product Information

Description	Anti-NEDD1 (RABBIT) Antibody
Host	Rabbit
Conjugate	Unconjugated
Target Species	Human
Reactivity	Human
Clonality	Polyclonal
Application	WB
Physical State	Liquid (sterile filtered)
Host Isotype	Antiserum
Buffer	0.02 M Potassium Phosphate, 0.15 M Sodium Chloride, pH 7.2
Immunogen	Anti-NEDD1 was prepared from whole rabbit serum produced by repeated immunizations with a recombinant protein corresponding to the 343-667 region of human Nedd1.
Stabilizer	None
Preservative	0.01% (w/v) Sodium Azide

Additional Information

Shipping Condition	Dry Ice
Application Note	This antiserum has been tested for use in ELISA and western blotting using a recombinant truncated Nedd1 protein. Specific conditions for reactivity and detection of Nedd1 should be optimized by the end user. Expect a band approximately ~73 kDa in size corresponding to Nedd1 by western blotting in the appropriate cell lysate or extract.
Purity	This product was adsorbed against GST from monospecific antiserum by immunoaffinity chromatography. This antibody reacts with endogenous Nedd1 protein. A BLAST analysis was used to suggest reactivity with Nedd1 from human, chimpanzee, macaque, marmoset, cattle, rat, and mouse based on a 100% homology with the immunizing sequence. Expect partial reactivity with Nedd1 from turkey, chicken, salmon, and Danio based on a 91% homology with the immunizing sequence. Cross-reactivity with Nedd1 from other sources has not been determined.
Storage Condition	Store vial at -20° C or below prior to opening. This vial contains a relatively low volume of reagent (25 μ L). To minimize loss of volume dilute 1:10 by adding 225 μ L of the buffer stated above directly to the vial. Recap, mix thoroughly and briefly centrifuge to collect the volume at the bottom of the vial. Use this intermediate dilution when calculating final dilutions as recommended below. Store the vial at -20°C or below after dilution. Avoid cycles of freezing and thawing.

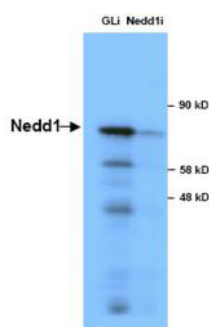
Precautions Note

This product is for research use only and is not intended for therapeutic or diagnostic applications.

Background

This antibody is designed, produced, and validated as part of a collaboration between Rockland and the National Cancer Institute (NCI) and is suitable for Cancer, Immunology and Nuclear Signaling research. Microtubules are polymers of tubulin, which exist as heterodimers of alpha-tubulin and beta-tubulin. NEDD1 (neural precursor expressed, developmentally down-regulated protein1; also called GCP-WD) is a centrosomal protein that in mammals associates with the gamma-tubulin ring complex (γ -TuRC). γ -TuRC is critical for initiation, or nucleation, of the microtubule assembly. In association with this complex, NEDD1 plays an important role in targeting the γ -TuRC complex to the site of microtubule nucleation and to the mitotic spindle. These events are essential for proper bipolar spindle formation and mitotic progression. Given the casual link between improper spindle function and tumorigenesis, characterization of Nedd1 function will be important to better understand various mechanisms underlying mitotic regulation, chromosome segregation, and cancer development.

Images



Anti-NEDD1 in Western Blot using Abcepta Immunochemicals' Anti-NEDD1 Antibody shows detection of a 73 kDa band corresponding to endogenous NEDD1 in lysates of S phase HeLa cells silenced for either control Luciferase or NEDD1. In right lane (NEDD1i): lysates from sh-NEDD1 RNAi-treated lentivirus-infected cells. In left lane (GLi): lysates from sh-Luciferase lentivirus-infected cells as control. Anti-NEDD1 Antibody was used at 1:10,000. Molecular weight estimation was made by comparison by prestained MW markers. ECL was used for detection. Personal communication, Kyung S. Lee, NCI, Bethesda, MD.

Please note: All products are 'FOR RESEARCH USE ONLY. NOT FOR USE IN DIAGNOSTIC OR THERAPEUTIC PROCEDURES'.