

Anti-Goat IgG (H&L) (ATTO 655 Conjugated) Pre-Adsorbed Secondary Antibody

Rabbit Polyclonal, ATTO 655
Catalog # ASR1146

Product Information

| | |
|------------------------------|---|
| Description | Anti-GOAT IgG (H&L) (RABBIT) Antibody ATTO 655 Conjugated (Min X Hu, Ms, Rb Serum Proteins) |
| Host | Rabbit |
| Conjugate | ATTO 655 |
| FP Value | 3.5 moles ATTO 655 per mole of IgG |
| Target Species | Goat |
| Clonality | Polyclonal |
| Application | IF |
| Physical State | Lyophilized |
| Host Isotype | IgG |
| Target Isotype | IgG (H&L) |
| Buffer | 0.02 M Potassium Phosphate, 0.15 M Sodium Chloride, pH 7.2 |
| Immunogen | Goat IgG whole molecule |
| Reconstitution Volume | 100 μ L |
| Reconstitution Buffer | Restore with deionized water (or equivalent) |
| Stabilizer | 10 mg/mL Bovine Serum Albumin (BSA) - Immunoglobulin and Protease free |
| Preservative | 0.01% (w/v) Sodium Azide |

Additional Information

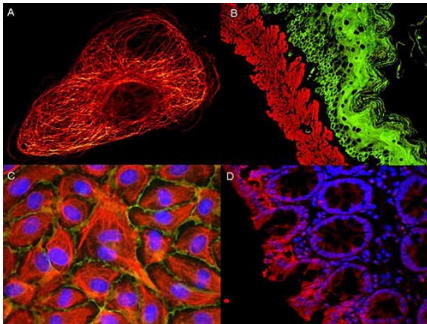
| | |
|---------------------------|---|
| Shipping Condition | Ambient |
| Application Note | The emission spectra for this ATTO conjugate matches the principle output wavelengths of most common fluorescence instrumentation. |
| Purity | Goat IgG (H&L) Antibody ATTO 655 Conjugated (Pre-Adsorbed) was prepared from monospecific antiserum by immunoaffinity chromatography using Goat IgG coupled to agarose beads followed by solid phase adsorption(s) to remove any unwanted reactivities. Assay by immunoelectrophoresis resulted in a single precipitin arc against anti-Rabbit Serum, Goat IgG and Goat Serum. No reaction was observed against Human, Mouse or Rabbit Serum Proteins. This antibody will react with heavy chains of Goat IgG and with light chains of most Goat immunoglobulins. |
| Storage Condition | Store vial at 4° C prior to restoration. For extended storage aliquot contents and freeze at -20° C or below. Avoid cycles of freezing and thawing. Centrifuge product if not completely clear after standing at room temperature. This product is stable for several weeks at 4° C as an undiluted liquid. Dilute only prior to immediate use. |
| Precautions Note | This product is for research use only and is not intended for therapeutic or |

diagnostic applications.

Background

Goat IgG (H&L) Antibody ATTO 655 Conjugated (Pre-Adsorbed) is designed for STED microscopy, FRET, immunofluorescence microscopy, fluorescence based plate assays (FLISA) and fluorescent western blotting. This product is also suitable for multiplex analysis, including multicolor imaging, utilizing various commercial platforms.

Images



ATTO ® dyes can be used for multicolor immunofluorescent detection with low background and high signal. Examples shown are: A. Tubulin in Ptk2- male Rat Kangaroo Kidney Epithelial Cells was detected using ATTO 532 labeled secondary antibody. B. Muscle alpha-actin was stained with a mouse primary antibody and ATTO 488 anti-mouse IgG (green) while Cytokeratin was stained with polyclonal rabbit anti-cytokeratin and ATTO 647N anti-rabbit IgG (red). C. HUVEC (Human umbilical vein endothelial cells) were stained with anti-Vimentin-ATTO 532 (green), anti-E-Cadherin-ATTO 655 (red) and DAPI (blue). D. Rat colon sections were stained with Anti-Aquaporin 3-ATTO 594 antibody. Hoechst 33342 (blue) is used as counterstain. Images provided courtesy of Dr. Jörg Reichwein, ATTO-TEC GmbH

Please note: All products are 'FOR RESEARCH USE ONLY. NOT FOR USE IN DIAGNOSTIC OR THERAPEUTIC PROCEDURES'.