

# Anti-MOUSE IgG (H&L) Secondary Antibody

Goat Polyclonal, Unconjugated

Catalog # ASR1149

## Product Information

---

<b>Description</b>	Anti-MOUSE IgG (H&L) (GOAT) Antibody
<b>Host</b>	Goat
<b>Conjugate</b>	Unconjugated
<b>Target Species</b>	Mouse
<b>Reactivity</b>	Mouse
<b>Clonality</b>	Polyclonal
<b>Application</b>	WB
<b>Physical State</b>	Liquid (sterile filtered)
<b>Host Isotype</b>	IgG
<b>Target Isotype</b>	IgG (H&L)
<b>Buffer</b>	0.02 M Potassium Phosphate, 0.15 M Sodium Chloride, pH 7.2
<b>Immunogen</b>	Anti-Mouse IgG whole molecule was produced by repeated immunization with Mouse IgG whole molecule in goat.
<b>Stabilizer</b>	None
<b>Preservative</b>	0.01% (w/v) Sodium Azide

## Additional Information

---

<b>Shipping Condition</b>	Wet Ice
<b>Application Note</b>	Anti-Mouse IgG whole molecule is suitable for use in immunoelectrophoresis, western-blot, competitive western-blot, ELISA and competitive ELISA assays. Specific conditions for reactivity and signal detection should be optimized by the end user.
<b>Purity</b>	Secondary Antibody Anti-Mouse IgG (H&L) was prepared from monospecific antiserum by immunoaffinity chromatography using Mouse IgG coupled to agarose. Assay by immunoelectrophoresis resulted in a single precipitin arc against anti-Goat Serum, Mouse IgG and Mouse Serum.
<b>Storage Condition</b>	Store Anti-Mouse Secondary Antibody at 4° C prior to opening. This product is stable for several weeks at 4° C as an undiluted liquid. Dilute only prior to immediate use. For extended storage aliquot contents and freeze at -20° C or below. Avoid cycles of freezing and thawing.
<b>Precautions Note</b>	This product is for research use only and is not intended for therapeutic or diagnostic applications.

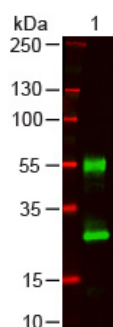
## Background

---

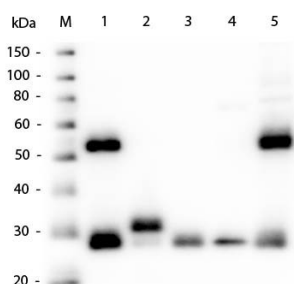
Anti-Mouse IgG affinity purified secondary antibody is generated in goat detects specifically Mouse IgG whole molecule . This secondary antibody anti-Mouse is ideal for investigators who routinely perform ELISA,

Sandwich ELISA, titration assays, western-blot, immunoprecipitation and more generally immunoassays.

## Images



Western Blot of Goat anti-Mouse IgG (H&L) Antibody. Lane 1: Mouse IgG. Lane 2: None. Load: 100 ng per lane. Primary Antibody: Mouse IgG (H&L) Antibody 1:1000 overnight at 4°C. Secondary antibody: DyLight™ 800 goat secondary antibody at 1:20,000 for 30 min at RT. Block: MB-070 for 30 min at RT. Predicted/Obsevered Size: 28 and 55 kDa/28 and 55 kDa for Mouse IgG. Other band(s): none.



Western Blot of Goat Anti-Mouse IgG (H&L) Antibody. Lane M: Molecular Ladder. Lane 1: Mouse IgG whole molecule. Lane 2: Mouse IgG F(c) Fragment. Lane 3: Mouse IgG F(ab) Fragment. Lane 4: Mouse IgM Kappa. Lane 5: Mouse Serum. Load: 50ng per lane. Block: MB-070 for 30 min at RT. Primary Antibody: Anti-Mouse IgG (H&L) Antibody 1:1000 for 60 min at RT. Secondary antibody: HRP Donkey Anti-Goat IgG (p/n 805-703-125)1:40,000 for 30 min at RT . Predicted/Obsevered Size: 28 and 55 kDa for Mouse IgG, F(c), F(ab), IgM Kappa, and Serum. Mouse F(c) migrates slightly higher.

Please note: All products are 'FOR RESEARCH USE ONLY. NOT FOR USE IN DIAGNOSTIC OR THERAPEUTIC PROCEDURES'.