

# Anti-Rat IgG (H&L) (ATTO 488 Conjugated) Pre-Adsorbed Secondary Antibody

Goat Polyclonal, ATTO 488

Catalog # ASR1173

## Product Information

---

<b>Description</b>	Anti-RAT IgG (H&L) (GOAT) Antibody ATTO 488 Conjugated (Min X Bv Ch Gt GP Ham Hs Hu Ms Rb & Sh Serum Proteins)
<b>Host</b>	Goat
<b>Conjugate</b>	ATTO 488
<b>FP Value</b>	2.5 moles ATTO 488 per mole of IgG
<b>Target Species</b>	Rat
<b>Clonality</b>	Polyclonal
<b>Application</b>	IF, WB
<b>Physical State</b>	Lyophilized
<b>Host Isotype</b>	IgG
<b>Target Isotype</b>	IgG (H&L)
<b>Buffer</b>	0.02 M Potassium Phosphate, 0.15 M Sodium Chloride, pH 7.2
<b>Immunogen</b>	Rat IgG whole molecule
<b>Reconstitution Volume</b>	100 $\mu$ L
<b>Reconstitution Buffer</b>	Restore with deionized water (or equivalent)
<b>Stabilizer</b>	10 mg/mL Bovine Serum Albumin (BSA) - Immunoglobulin and Protease free
<b>Preservative</b>	0.01% (w/v) Sodium Azide

## Additional Information

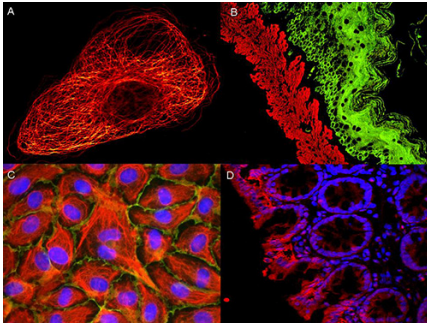
---

<b>Shipping Condition</b>	Ambient
<b>Application Note</b>	The emission spectra for this ATTO conjugate matches the principle output wavelengths of most common fluorescence instrumentation.
<b>Purity</b>	Rat IgG (H&L) Antibody ATTO 488 was prepared from monospecific antiserum by immunoaffinity chromatography using Rat IgG coupled to agarose beads followed by solid phase adsorption(s) to remove any unwanted reactivities. Assay by immunoelectrophoresis resulted in a single precipitin arc against anti-Goat Serum, Rat IgG and Rat Serum. No reaction was observed against Bovine, Chicken, Goat, Guinea Pig, Hamster, Horse, Human, Mouse, Rabbit and Sheep Serum Proteins. This antibody will react with heavy chains of rat IgG and with light chains of most rat immunoglobulins.
<b>Storage Condition</b>	Store vial at 4° C prior to restoration. For extended storage aliquot contents and freeze at -20° C or below. Avoid cycles of freezing and thawing. Centrifuge product if not completely clear after standing at room temperature. This product is stable for several weeks at 4° C as an undiluted liquid. Dilute only prior to immediate use.
<b>Precautions Note</b>	This product is for research use only and is not intended for therapeutic or

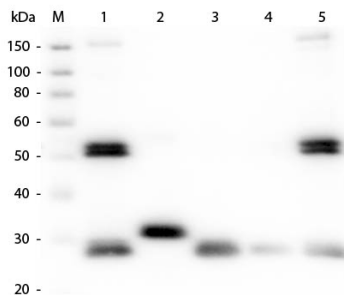
## Background

Anti-Rat IgG (H&L) conjugated to ATTO 488 is designed for STED microscopy, FRET, immunofluorescence microscopy, fluorescence based plate assays (FLISA) and fluorescent western blotting. This product is also suitable for multiplex analysis, including multicolor imaging, utilizing various commercial platforms.

## Images



ATTO ® dyes can be used for multicolor immunofluorescent detection with low background and high signal. Examples shown are: A. Tubulin in Ptk2- male Rat Kangaroo Kidney Epithelial Cells was detected using ATTO 532 labeled secondary antibody. B. Muscle alpha-actin was stained with a mouse primary antibody and ATTO 488 anti-mouse IgG (green) while Cytokeratin was stained with polyclonal rabbit anti-cytokeratin and ATTO 647N anti-rabbit IgG (red). C. HUVEC (Human umbilical vein endothelial cells) were stained with anti-Vimentin-ATTO 532 (green), anti-E-Cadherin-ATTO 655 (red) and DAPI (blue). D. Rat colon sections were stained with Anti-Aquaporin 3-ATTO 594 antibody. Hoechst 33342 (blue) is used as counterstain. Images provided courtesy of Dr. Jörg Reichwein, ATTO-TEC GmbH



Western Blot of Anti-Rat IgG (H&L) (GOAT) Antibody (Min X Bv Ch Gt GP Ham Hs Hu Ms Rb & Sh Serum Proteins) (p/n 612-101-120). Lane M: 3 µl Molecular Ladder. Lane 1: Rat IgG whole molecule (p/n 012-0102). Lane 2: Rat IgG F(c) Fragment (p/n 012-0103). Lane 3: Rat IgG F(ab) Fragment (p/n 012-0105). Lane 4: Rat IgM Whole Molecule (p/n 012-0107). Lane 5: Rat Serum (p/n D310-05). All samples were reduced. Load: 50 ng per lane. Block: MB-070 for 30 min at RT. Primary Antibody: Anti-Rat IgG (H&L) (GOAT) Antibody (Min X Bv Ch Gt GP Ham Hs Hu Ms Rb & Sh Serum Proteins) (p/n 612-101-120) 1:1,000 for 60 min at RT. Secondary Antibody: Anti-Goat IgG (DONKEY) Peroxidase Conjugated Antibody (p/n CUST10) 1:40,000 in MB-070 for 30 min at RT. Predicted/Observed Size: 25 and 55 kDa for Rat IgG and Serum, 25 kDa for F(c) and F(ab), 78 and 25 kDa for IgM. Rat F(c) migrates slightly higher.

Please note: All products are 'FOR RESEARCH USE ONLY. NOT FOR USE IN DIAGNOSTIC OR THERAPEUTIC PROCEDURES'.