

# Rat IgG Texas Red™

Catalog # ASR1216

## Product Information

---

<b>Description</b>	RAT IgG whole molecule Texas Red™ conjugated
<b>Conjugate</b>	Texas Red®
<b>FP Value</b>	3.2 moles Texas Red® per mole of Rat IgG
<b>Physical State</b>	Lyophilized
<b>Host Isotype</b>	IgG
<b>Buffer</b>	0.02 M Potassium Phosphate, 0.15 M Sodium Chloride, pH 7.2
<b>Species of Origin</b>	Rat
<b>Reconstitution Volume</b>	1.0 mL
<b>Reconstitution Buffer</b>	Restore with deionized water (or equivalent)
<b>Stabilizer</b>	10 mg/mL Bovine Serum Albumin (BSA) - Immunoglobulin and Protease free
<b>Preservative</b>	0.01% (w/v) Sodium Azide

## Additional Information

---

<b>Shipping Condition</b>	Ambient
<b>Purity</b>	This product was prepared from normal serum by delipidation, salt fractionation, ion exchange chromatography followed by extensive dialysis against the buffer stated above. Assay by immunoelectrophoresis resulted in a single precipitin arc against anti-Rat IgG and anti-Rat Serum.
<b>Storage Condition</b>	Store vial at 4° C prior to restoration. For extended storage aliquot contents and freeze at -20° C or below. Avoid cycles of freezing and thawing. Centrifuge product if not completely clear after standing at room temperature. This product is stable for several weeks at 4° C as an undiluted liquid. Dilute only prior to immediate use.
<b>Precautions Note</b>	This product is for research use only and is not intended for therapeutic or diagnostic applications.

## Background

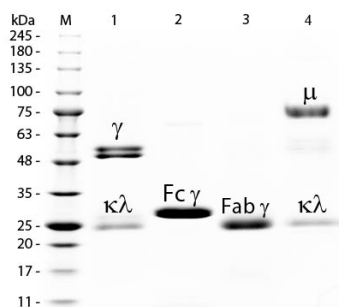
---

This product is designed for immunofluorescence microscopy, fluorescence based plate assays (FLISA) and fluorescent western blotting. This product is also suitable for multiplex analysis, including multicolor imaging, utilizing various commercial platforms.

## Images

---

SDS-PAGE of Rat IgG Whole Molecule Texas Red™  
Conjugated (p/n ASR1216). Lane M: 3 µL Opal Prestained  
Marker (p/n MB-210-0500). Lane 1: Reduced Rat IgG  
Whole Molecule Texas Red™ Conjugated (p/n ASR1216).



Lane 2: Reduced Rat IgG F(c) Fragment (p/n 012-0103).  
 Lane 3: Reduced Rat IgG F(ab) Fragment (p/n 012-0105).  
 Lane 4: Reduced Rat IgM Whole Molecule (p/n 012-0107).  
 Load: 1 µg of IgG, F(c), F(ab); 1.5 µg of IgM.  
 Predicted/Observed size: IgG at 55 and 25 kDa; F(c) at 25 kDa; F(ab) at 25 kDa; IgM at 78 and 25 kDa. Observed F(c) Fragment migrates slightly higher.

Please note: All products are 'FOR RESEARCH USE ONLY. NOT FOR USE IN DIAGNOSTIC OR THERAPEUTIC PROCEDURES'.