

Anti-GOAT IgG (H&L) Secondary Antibody

Rabbit Polyclonal, Unconjugated

Catalog # ASR1227

Product Information

Description	Anti-GOAT IgG (H&L) (RABBIT) Antibody
Host	Rabbit
Conjugate	Unconjugated
Target Species	Goat
Clonality	Polyclonal
Application	WB
Physical State	Liquid (sterile filtered)
Host Isotype	IgG
Target Isotype	IgG (H&L)
Buffer	0.02 M Potassium Phosphate, 0.15 M Sodium Chloride, pH 7.2
Immunogen	Goat IgG whole molecule
Stabilizer	None
Preservative	0.01% (w/v) Sodium Azide

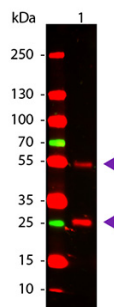
Additional Information

Shipping Condition	Wet Ice
Application Note	Secondary antibody reagents are ideal for western blotting, Immunohistochemistry, ELISA, Fluorescence Microscopy, Flow Cytometry as well as other antibody detection methods.
Purity	Secondary Antibody was prepared from monospecific antiserum by immunoaffinity chromatography using Goat IgG coupled to agarose beads. Assay by immunoelectrophoresis resulted in a single precipitin arc against anti-Rabbit Serum, Goat IgG and Goat Serum.
Storage Condition	Store vial at 4° C prior to opening. This product is stable for several weeks at 4° C as an undiluted liquid. Dilute only prior to immediate use. For extended storage aliquot contents and freeze at -20° C or below. Avoid cycles of freezing and thawing.
Precautions Note	This product is for research use only and is not intended for therapeutic or diagnostic applications.

Background

Secondary Antibodies are available in a variety of formats and conjugate types. When choosing a secondary antibody product, consideration must be given to species and immunoglobulin specificity, conjugate type, fragment and chain specificity, level of cross-reactivity, and host-species source and fragment composition.

Images



Western Blot of Rabbit anti-Goat IgG Antibody. Lane 1: Goat IgG. Lane 2: None. Load: 50 ng per lane. Primary antibody: Goat antibody at 1,000 overnight at 4°C. Secondary antibody: DyLight™ 649 rabbit secondary antibody at 1:20,000 for 30 min at RT. Block: MB-070 for 30 min at RT. Predicted/Observed size: 28 & 55 kDa, 28 & 55 kDa for Goat IgG. Other band(s): None

Please note: All products are 'FOR RESEARCH USE ONLY. NOT FOR USE IN DIAGNOSTIC OR THERAPEUTIC PROCEDURES'.