

# Anti-Rabbit IgG (H&L) (Fluorescein Conjugated) Secondary Antibody

Goat Polyclonal, Fluorescein (FITC)

Catalog # ASR1239

## Product Information

---

<b>Description</b>	Anti-RABBIT IgG (H&L) (GOAT) Antibody Fluorescein Conjugated
<b>Host</b>	Goat
<b>Conjugate</b>	Fluorescein (FITC)
<b>FP Value</b>	2.4 moles Fluorescein (FITC) per mole of IgG
<b>Target Species</b>	Rabbit
<b>Reactivity</b>	Rabbit
<b>Clonality</b>	Polyclonal
<b>Application</b>	DB, WB
<b>Physical State</b>	Lyophilized
<b>Host Isotype</b>	IgG
<b>Target Isotype</b>	IgG (H&L)
<b>Buffer</b>	0.02 M Potassium Phosphate, 0.15 M Sodium Chloride, pH 7.2
<b>Immunogen</b>	Rabbit IgG whole molecule
<b>Reconstitution Volume</b>	1.0 mL
<b>Reconstitution Buffer</b>	Restore with deionized water (or equivalent)
<b>Stabilizer</b>	10 mg/mL Bovine Serum Albumin (BSA) - Immunoglobulin and Protease free
<b>Preservative</b>	0.01% (w/v) Sodium Azide

## Additional Information

---

<b>Shipping Condition</b>	Ambient
<b>Purity</b>	This product was prepared from monospecific antiserum by immunoaffinity chromatography using Rabbit IgG coupled to agarose beads followed by solid phase adsorption(s) to remove any unwanted reactivities. Assay by immunoelectrophoresis resulted in a single precipitin arc against anti-Fluorescein, anti-Goat Serum, Rabbit IgG and Rabbit Serum.
<b>Storage Condition</b>	Store vial at 4° C prior to restoration. For extended storage aliquot contents and freeze at -20° C or below. Avoid cycles of freezing and thawing. Centrifuge product if not completely clear after standing at room temperature. This product is stable for several weeks at 4° C as an undiluted liquid. Dilute only prior to immediate use.
<b>Precautions Note</b>	This product is for research use only and is not intended for therapeutic or diagnostic applications.

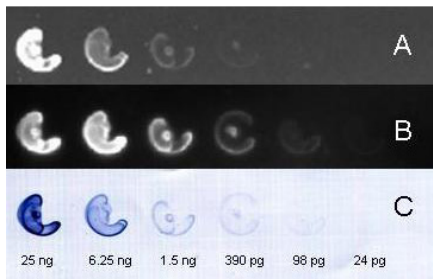
## Background

---

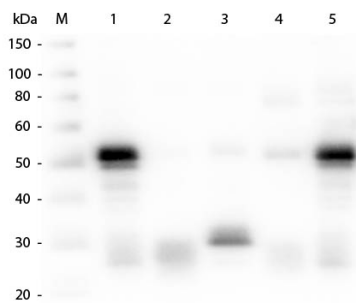
This product is designed for immunofluorescence microscopy, fluorescence based plate assays (FLISA) and

fluorescent western blotting. This product is also suitable for multiplex analysis, including multicolor imaging, utilizing various commercial platforms.

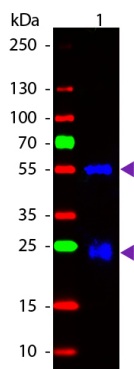
## Images



Abcepta FITC (fluorescein) and HRP (horse radish peroxidase) conjugated secondary antibody was used to detect nanogram – picogram levels of rabbit IgG by dot blot on nitrocellulose membrane. 4 ul each of serial 1 in 4 dilutions of rabbit IgG were dotted on nitrocellulose and allowed to dry. Membrane was blocked in 3% BSA for 10 minutes dried for later use and rewetted with MB-070. Blot was incubated in Abcepta fluorescein conjugated goat anti rabbit ASR1239 lot 25176 1:10,000 and Abcepta HRP conjugated goat anti Rabbit (611-1302 lot 25406 1:10,000, dried and: A. Blot was imaged on the BioRad VersaDoc with filter settings appropriate for Fluorescein/DyLight 488 B. Blot was rewetted with TBS, incubated with FEMTOMAX chemiluminescent substrate for 1-3 minutes and imaged for 60sec on the BioRad VersaDoc Imaging System C. Blot was rinsed with TBS and DIH<sub>2</sub>O, incubated for 5 minutes with Abcepta TMB Substrate for Western Blot MaxTag (1 ml of TMBM-102 + ~9 ml of TMBM-101), dried overnight and imaged using a conventional flatbed scanner



Western Blot of Anti-Rabbit IgG (H&L) (GOAT) Antibody (p/n 611-1102). Lane M: 3  $\mu$ l Molecular Ladder. Lane 1: Rabbit IgG whole molecule (p/n 011-0102). Lane 2: Rabbit IgG F(ab) Fragment (p/n 011-0105). Lane 3: Rabbit IgG F(c) Fragment (p/n 010-0103). Lane 4: Rabbit IgM Whole Molecule (p/n 011-0107). Lane 5: Normal Rabbit Serum (p/n B309). All samples were reduced. Load: 50 ng per lane. Block: MB-070 for 30 min at RT. Primary Antibody: Anti-Rabbit IgG (H&L) (GOAT) Antibody (p/n 611-1102) 1:1,000 for 60 min at RT. Secondary antibody: Anti-Goat IgG (DONKEY) Peroxidase Conjugated Antibody (p/n CUST10) 1:40,000 in MB-070 for 30 min at RT. Predicted/Observed Size: 25 and 50 kDa for Rabbit IgG and Serum, 25 kDa for F(c) and F(ab), 70 and 23 kDa for IgM. Rabbit F(c) migrates slightly higher.



Western blot of Fluorescein conjugated Goat Anti-Rabbit IgG secondary antibody. Lane 1: Rabbit IgG. Lane 2: None. Load: 50 ng per lane. Primary antibody: None. Secondary antibody: Fluorescein goat secondary antibody at 1:1,000 for 60 min at RT. Blocking: MB-070 for 30 min at RT. Predicted/Observed size: 25 & 55 kDa, 25 & 55 kDa for Rabbit IgG. Other band(s): None.

Please note: All products are 'FOR RESEARCH USE ONLY. NOT FOR USE IN DIAGNOSTIC OR THERAPEUTIC PROCEDURES'.