

Chicken IgG Biotin

Catalog # ASR1261

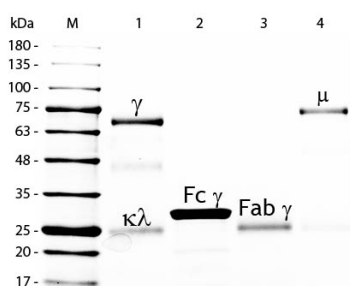
Product Information

| | |
|------------------------------|--|
| Description | CHICKEN IgG whole molecule Biotin conjugated |
| Conjugate | Biotin |
| Physical State | Lyophilized |
| Host Isotype | IgG |
| Buffer | 0.02 M Potassium Phosphate, 0.15 M Sodium Chloride, pH 7.2 |
| Species of Origin | Chicken |
| Reconstitution Volume | 1.0 mL |
| Reconstitution Buffer | Restore with deionized water (or equivalent) |
| Stabilizer | 10 mg/mL Bovine Serum Albumin (BSA) - Immunoglobulin and Protease free |
| Preservative | 0.01% (w/v) Sodium Azide |

Additional Information

| | |
|---------------------------|---|
| Shipping Condition | Ambient |
| Purity | This product was prepared from normal serum delipidation, salt fractionation, ion exchange chromatography followed by extensive dialysis against the buffer stated above. Assay by immunoelectrophoresis resulted in a single precipitin arc against anti-biotin, anti-Chicken IgG and anti-Chicken Serum. |
| Storage Condition | Store vial at 4° C prior to restoration. For extended storage aliquot contents and freeze at -20° C or below. Avoid cycles of freezing and thawing. Centrifuge product if not completely clear after standing at room temperature. This product is stable for several weeks at 4° C as an undiluted liquid. Dilute only prior to immediate use. |
| Precautions Note | This product is for research use only and is not intended for therapeutic or diagnostic applications. |

Images



SDS-PAGE of Chicken IgG Whole Molecule Biotin Conjugated (p/n ASR1261). Lane M: 5 μ L Opal Prestained Marker (p/n MB-210-0500). Lane 1: Reduced Chicken IgG Whole Molecule Biotin Conjugated (p/n ASR1261). Lane 2: Reduced Chicken IgG F(c) Fragment (p/n 003-0103). Lane 3: Reduced Chicken IgG F(ab) Fragment (p/n 003-0105). Lane 4: Reduced Chicken IgM Whole Molecule (p/n 003-0107). Load: 1 μ g per lane. Predicted/Observed size: IgG at 72 and 25 kDa; F(c) at 25 kDa; F(ab) at 25 kDa; IgM at 75 kDa. Observed F(c) Fragment migrates slightly

higher. Other bands: Chicken IgG heavy chain alternative splicing variant at approximately 40 kDa in Lane 1.

Please note: All products are 'FOR RESEARCH USE ONLY. NOT FOR USE IN DIAGNOSTIC OR THERAPEUTIC PROCEDURES'.